

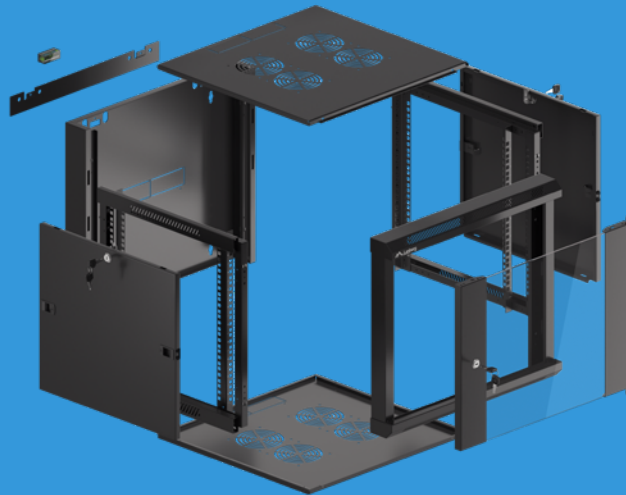
WAFA-5609-10B

WALL-MOUNT CABINET ASSEMBLED



SPECIFICATION:

Rack standard		19"			
Server cabinet type		Wall-mount, single section			
Assembly		Assembled			
Material of the frame and other element(s)		High-grade cold-rolled steel (SPCC), powder-coated			
Surface finish of the frame and other element(s)		Degreased, pickled, parkerized, powder coated with a matt finish. Protected against oxidation, corrosion, rust			
Height		9 [U]			
		500 [mm]			
Width	Cabinet structure	570 [mm]			
	Cabinet structure incl. door lock(s)	580 [mm]			
Length	Cabinet structure	600 [mm]			
	Cabinet structure incl. door lock(s) and wall-mount rail	606.20 [mm]			
Mounting depth	Front rail - rear rail (max. spacing)	411 [mm]			
	Front rail - rear cover	501.2 [mm]			
Cabinet structure	Max. static load capacity	60 [kg]			
	Protection rating (according to EN 60529)	IP20			
Dimensions of the structure / elements (Length x Width x Height)	Door	Front	22 x 566 x 412.6 [mm]		
		Side	21.5 x 456 x 418 [mm]		
	Frame	Front	73 x 570 x 499.6 [mm]		
		Side	38.5 x 478 x 497 [mm]		
	Rear cover		70 x 570 x 499.6 [mm]		
	Mounting rail(s)		30.5 x 20.5 x 468.8 [mm]		
	Wall-mount rail		5.4 x 500 x 49.5 [mm]		
	Top and bottom panel		507.2 x 532.4 x 12.5 [mm]		
	Structure and other element(s) thickness	Door	Front	Glass	5 [mm]
				Sheet metal	1 [mm]
Frame		Side	Front	1 [mm]	
			Side	1 [mm]	
		Rear cover		1 [mm]	
		Mounting rail(s)		1.2 [mm]	
Wall-mount rail		1.2 [mm]			
Top and bottom panel		1 [mm]			
Vents		Number	Top panel	4 [pcs]	
			Bottom panel	4 [pcs]	
	Dimensions (Length x Width)	Top panel	120 x 120 [mm]		
		Bottom panel	120 x 120 [mm]		



SPECIFICATION:

Cable entry panel(s)	Number	Top panel	1 [pcs]
		Bottom panel	1 [pcs]
		Rear cover	1 [pcs]
	Dimensions (Length x Width)	Top panel	45 x 230 [mm]
		Bottom panel	45 x 230 [mm]
Rear cover		45 x 230 [mm]	
Grounding pin(s)	Number	5 [pcs]	
	Diameter	6 [mm]	
Slots for anchors on a horizontal wall-mount rail	Number	4 [pcs]	
	Diameter	4 - ø 10	
Installation of vertical mounting rails on the frames of the cabinet	Number of mounting holes	5 [pcs] (from the front and rear)	
	Gap between the mounting holes	20 [mm]	
Additional information	Front door	Removable, with a grounding pin. Enable two-sided assembly and rotation up to 180°. Equipped with tempered glass and a fixed lock	
	Side door(s)	Removable, with grounding pin, steel, with latches. Equipped with a fixed lock	
	Front frame	Equipped with small, rectangular vents and 2 grounding pins	
	Side frame(s)	With small, rectangular vents	
Compliant with standards	Rear cover	Fitted with a system of slots for mounting the wall strip and wall plugs	
	RoHS	IEC 62321-4:2013 + A1:2017; IEC 62321-5:2013; IEC 62321-6:2015; IEC 62321-7-1:2015; IEC 62321-7-2:2017; IEC 62321-8:2017	
	RACK	EIA/ECA-310-E; IEC 60297-3-100:2008; IEC 60297-3-101:2004	
Included accessories	Others	GB 15763.2-2005 (similar to EN 12150-1:2000 standard)	
	<ul style="list-style-type: none"> ● Required Phillips screws for assembling the cabinet, ● Flat wall-mount rail, ● Portable level with magnet, ● 4 mounting rails with „U“ height indication, ● Front lock and a set of side locks (all factory-fitted in doors with latches), ● Set of 3 double identical keys (1 for front door, 2 for side door), ● 10 M6*12 Phillips screws including M6 cage nuts. 		
Logistic details	Packaging	Number	1 [pcs]
		Type	Flatpack
	EAN	5901969422092	
Color		Black (RAL 9004)	
Warranty		60 [months]	