



**Cable ID: PCF8-10CU-0300**

Test Limit: ISO11801 Channel Class I (+All)

Limits Version: V7.8

Date / Time: 11/30/2023 04:01:25 PM

Operator: QC

Headroom 22.5 dB (NEXT 1,2-4,5)

Cable Type: Cat 8 S/FTP

NVP: 72.0%

Main: Versiv

S/N: 1824298

Software Version: V6.9 Build 2

Calibration Date: 12/02/2022

Adapter: DSX-8000 (DSX-CHA804)

S/N: 23050129

**Test Summary: PASS**

Remote: Versiv

S/N: 1820302

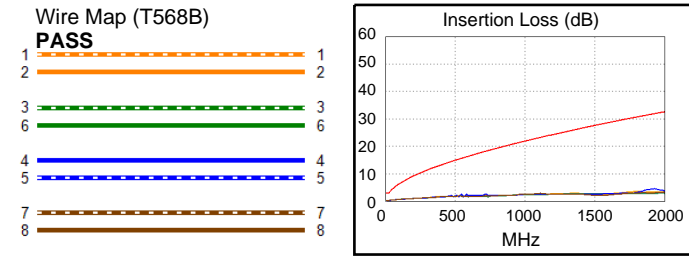
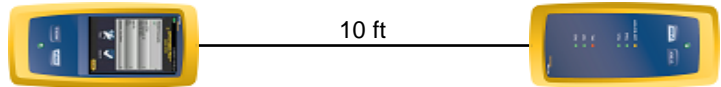
Software Version: V6.9 Build 2

Calibration Date: 12/02/2022

Adapter: DSX-8000R (DSX-CHA804)

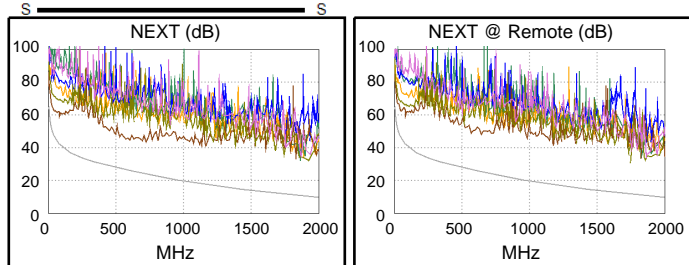
S/N: 23050130

Length (ft)	[Pair 1,2]	10
Prop. Delay (ns), Limit 169	[Pair 1,2]	14
Delay Skew (ns), Limit 16	[Pair 1,2]	0
Resistance (ohms), Limit 6.40	[Pair 1,2]	0.63
Resist. Unbal. (ohms), Limit 0.200	[Pair 7,8]	0.008
Resist. P2P Unbal. (ohms), Limit 0.200	[Pair 1,2-3,6]	0.134
Insertion Loss Margin (dB)	[Pair 4,5]	27.4
Frequency (MHz)	[Pair 4,5]	1948.0
Limit (dB)	[Pair 4,5]	32.2

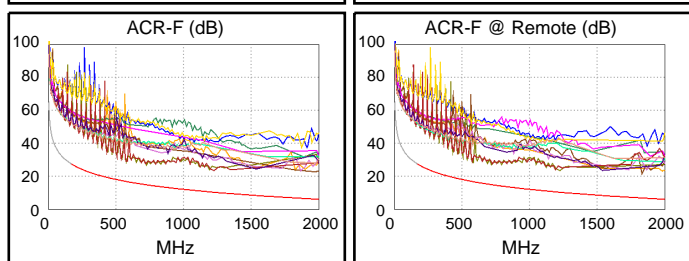


**Worst Case Margin Worst Case Value**

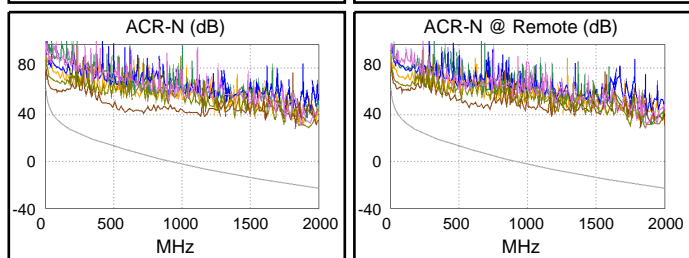
PASS	MAIN	SR	MAIN	SR
Worst Pair	1,2-4,5	1,2-4,5	3,6-7,8	3,6-7,8
<b>NEXT (dB)</b>	22.5	25.8	21.4	21.6
Freq. (MHz)	1862.	1902.	1932.	1882.
Limit (dB)	10.7	10.4	10.1	10.5
Worst Pair	4,5	4,5	7,8	7,8
<b>PS NEXT (dB)</b>	23.8	24.4	22.9	22.8
Freq. (MHz)	1864.	1870.	1934.	1872.
Limit (dB)	7.7	7.6	7.1	7.6



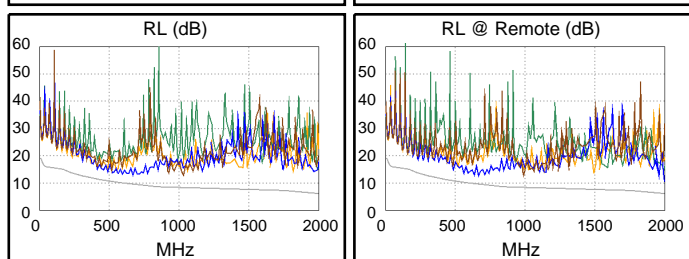
PASS	MAIN	SR	MAIN	SR
Worst Pair	4,5-3,6	3,6-4,5	3,6-1,2	3,6-1,2
<b>ACR-F (dB)</b>	11.4	11.0	15.8	14.9
Freq. (MHz)	577.0	577.0	1976.	1830.
Limit (dB)	16.7	16.7	6.1	6.7
Worst Pair	3,6	4,5	3,6	3,6
<b>PS ACR-F (dB)</b>	14.2	13.7	14.5	15.1
Freq. (MHz)	578.0	577.0	1548.	1678.
Limit (dB)	13.7	13.7	5.2	4.5



PASS	MAIN	SR	MAIN	SR
Worst Pair	1,2-4,5	1,2-4,5	3,6-7,8	3,6-7,8
<b>ACR-N (dB)</b>	49.7	53.2	50.3	49.6
Freq. (MHz)	1862.	1900.	1932.	1860.
Limit (dB)	-20.7	-21.3	-21.9	-20.6
Worst Pair	4,5	4,5	7,8	7,8
<b>PS ACR-N (dB)</b>	51.0	51.4	51.8	50.9
Freq. (MHz)	1866.	1872.	1934.	1872.
Limit (dB)	-23.7	-23.8	-24.9	-23.8



PASS	MAIN	SR	MAIN	SR
Worst Pair	1,2	4,5	4,5	4,5
<b>RL (dB)</b>	7.0	4.3	7.7	4.3
Freq. (MHz)	1352.	2000.	1962.	2000.
Limit (dB)	8.0	6.2	6.3	6.2



Compliant Network Standards:  
 10BASE-T      100BASE-TX      100BASE-T4  
 1000BASE-T    2.5GBASE-T      5GBASE-T  
 10GBASE-T    25GBASE-T      40GBASE-T  
 ATM-25        ATM-51            ATM-155  
 100VG-AnyLan    TR-4              TR-16 Active  
 TR-16 Passive



**Cable ID: PCF8-10CU-0300**

**Test Limit: ISO11801 Channel Class I (+All)**

Limits Version: V7.8

Date / Time: 11/30/2023 04:01:25 PM

Operator: QC

**Headroom 22.5 dB (NEXT 1,2-4,5)**

Cable Type: Cat 8 S/FTP

NVP: 72.0%

Main: Versiv

S/N: 1824298

Software Version: V6.9 Build 2

Calibration Date: 12/02/2022

Adapter: DSX-8000 (DSX-CHA804)

S/N: 23050129

**Test Summary: PASS**

Remote: Versiv

S/N: 1820302

Software Version: V6.9 Build 2

Calibration Date: 12/02/2022

Adapter: DSX-8000R (DSX-CHA804)

S/N: 23050130

	Worst Case Margin		Worst Case Value	
	MAIN	SR	MAIN	SR
<b>PASS</b>				
Worst Pair	1,2	4,5	1,2	4,5
<b>TCL (dB)</b>	16.2	14.9	16.2	14.9
Freq. (MHz)	1832.	1872.	1832.	1872.
Limit (dB)	3.0	3.0	3.0	3.0
<b>N/A</b>				
Worst Pair			7,8-3,6	7,8-3,6
<b>CDNEXT (dB)</b>			20.6	20.5
Freq. (MHz)			1024.	916.0
Limit (dB)				
<b>N/A</b>				
Worst Pair			3,6	3,6
<b>CMRL (dB)</b>			5.8	6.2
Freq. (MHz)			648.0	684.0
Limit (dB)				
<b>PASS</b>				
Worst Pair	4,5	4,5	4,5	4,5
<b>ELTCTL (dB)</b>	10.1	12.7	10.1	12.7
Freq. (MHz)	1908.	1944.	1908.	1944.
Limit (dB)	3.0	3.0	3.0	3.0

