



Cable ID: PCF6-10CU-0200

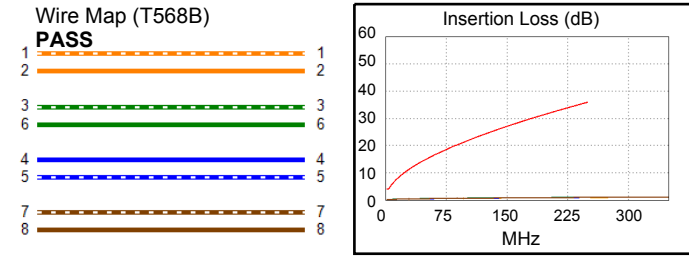
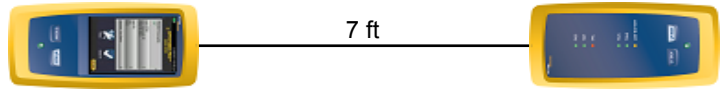
Test Limit: ISO11801 Channel Class E
Limits Version: V7.9
Date / Time: 08/08/2025 10:19:49 AM
Operator: QC
Headroom 18.8 dB (NEXT 3,6-4,5)
Cable Type: *cat 6 S/FTP*
NVP: 76.0%

Main: Versiv
S/N: 1824298
Software Version: V6.11 Build 2
Calibration Date: 12/27/2024
Adapter: DSX-8000 (DSX-CHA804)
S/N: 22211877

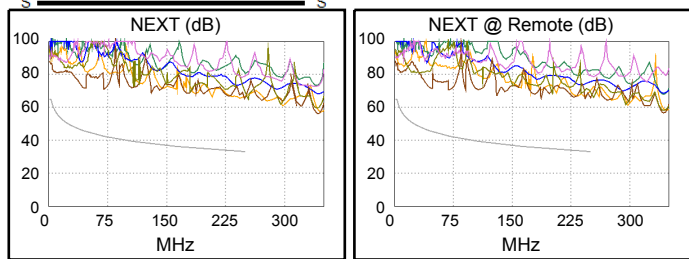
Test Summary: PASS

Remote: Versiv
S/N: 1820302
Software Version: V6.11 Build 2
Calibration Date: 12/27/2024
Adapter: DSX-8000R (DSX-CHA804)
S/N: 22211865

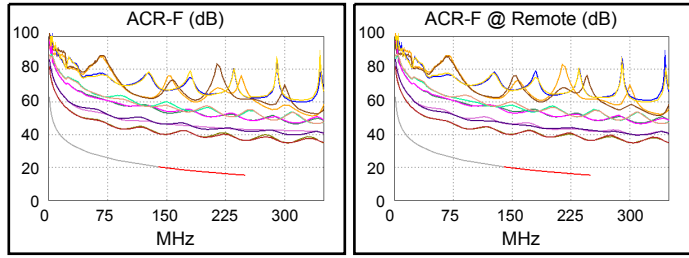
Length (ft), Limit 328	[Pair 1,2]	7
Prop. Delay (ns), Limit 555	[Pair 3,6]	10
Delay Skew (ns), Limit 50	[Pair 3,6]	1
Resistance (ohms), Limit 25.00	[Pair 1,2]	1.12
Insertion Loss Margin (dB)	[Pair 1,2]	35.0
Frequency (MHz)	[Pair 1,2]	250.0
Limit (dB)	[Pair 1,2]	35.9



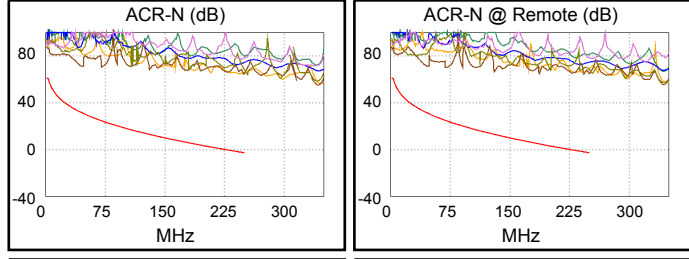
	Worst Case Margin		Worst Case Value	
N/A	MAIN	SR	MAIN	SR
Worst Pair	3,6-4,5	3,6-4,5	3,6-4,5	3,6-4,5
NEXT (dB)	20.9	18.8	32.3	32.1
Freq. (MHz)	3.3	3.0	249.0	243.0
Limit (dB)	64.5	65.0	33.1	33.3
Worst Pair	3,6	3,6	3,6	3,6
PS NEXT (dB)	22.1	20.2	32.1	32.0
Freq. (MHz)	3.4	3.3	249.5	242.5
Limit (dB)	61.7	62.0	30.2	30.4



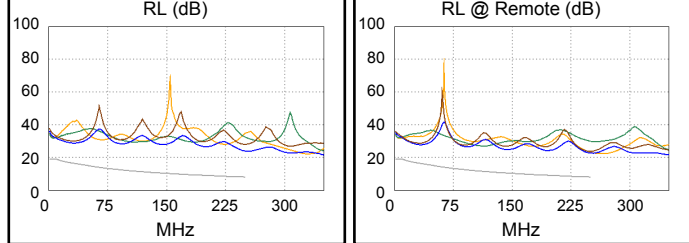
PASS	MAIN	SR	MAIN	SR
Worst Pair	4,5-3,6	3,6-4,5	3,6-4,5	3,6-4,5
ACR-F (dB)	19.5	19.6	21.2	21.2
Freq. (MHz)	92.3	92.3	250.0	250.0
Limit (dB)	24.0	24.0	15.3	15.3
Worst Pair	3,6	3,6	3,6	3,6
PS ACR-F (dB)	21.6	21.5	23.1	23.1
Freq. (MHz)	92.3	93.3	250.0	250.0
Limit (dB)	21.0	20.9	12.3	12.3



PASS	MAIN	SR	MAIN	SR
Worst Pair	3,6-4,5	3,6-4,5	3,6-4,5	3,6-4,5
ACR-N (dB)	24.8	22.7	67.2	66.5
Freq. (MHz)	3.3	3.0	249.0	243.0
Limit (dB)	60.5	61.0	-2.7	-2.0
Worst Pair	3,6	3,6	3,6	3,6
PS ACR-N (dB)	25.9	24.0	67.1	66.4
Freq. (MHz)	3.4	3.3	249.5	242.5
Limit (dB)	57.7	58.0	-5.7	-4.9



N/A	MAIN	SR	MAIN	SR
Worst Pair	4,5	4,5	4,5	4,5
RL (dB)	12.0	11.2	15.9	14.6
Freq. (MHz)	33.3	33.8	250.0	250.0
Limit (dB)	16.4	16.4	8.0	8.0



Compliant Network Standards:
 10BASE-T 100BASE-T4
 1000BASE-T 2.5GBASE-T 5GBASE-T
 ATM-25 ATM-51 ATM-155
 100VG-AnyLan TR-4 TR-16 Active
 TR-16 Passive