



**Cable ID: PCF6-10CU-0050**

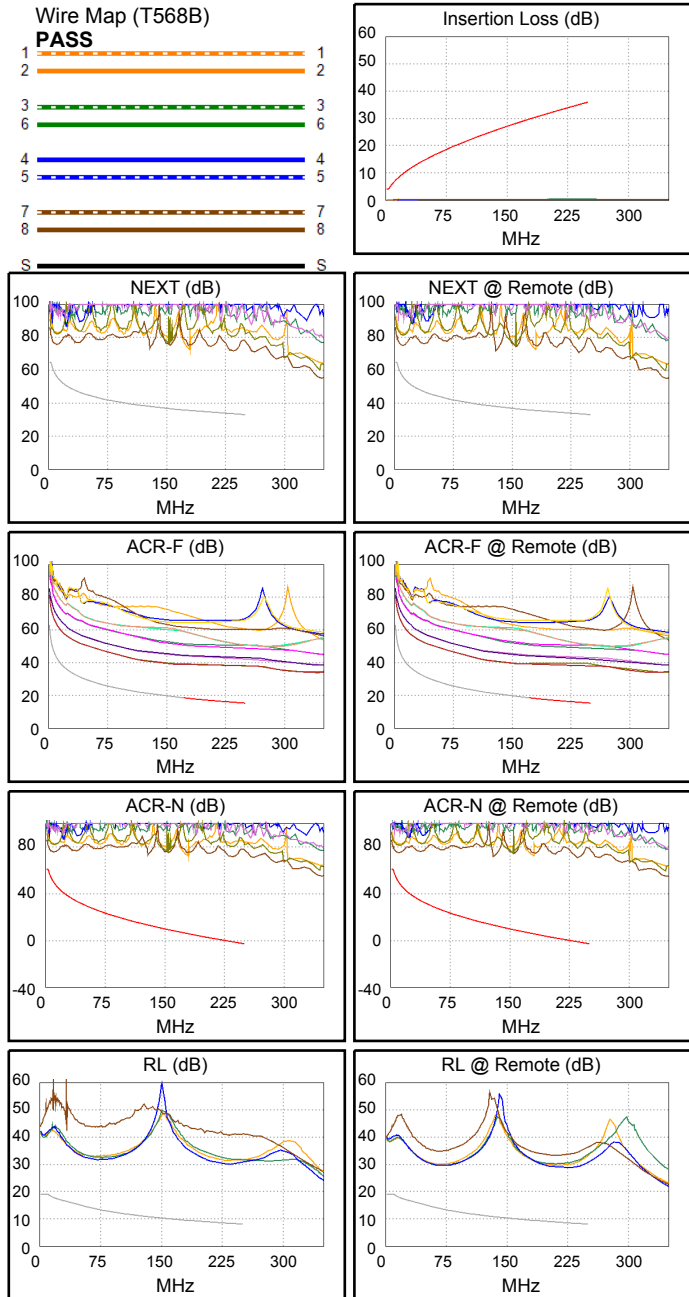
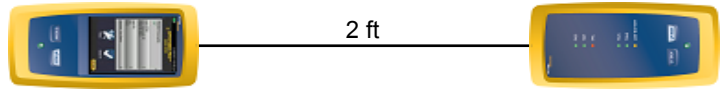
**Test Limit: ISO11801 Channel Class E**  
Limits Version: V7.9  
Date / Time: 08/08/2025 10:27:20 AM  
Operator: QC  
**Headroom 14.5 dB (NEXT 3,6-4,5)**  
Cable Type: \*cat 6 S/FTP\*  
NVP: 76.0%

Main: Versiv  
S/N: 1824298  
Software Version: V6.11 Build 2  
Calibration Date: 12/27/2024  
Adapter: DSX-8000 (DSX-CHA804)  
S/N: 22211877

**Test Summary: PASS**

Remote: Versiv  
S/N: 1820302  
Software Version: V6.11 Build 2  
Calibration Date: 12/27/2024  
Adapter: DSX-8000R (DSX-CHA804)  
S/N: 22211865

Length (ft), Limit 328	[Pair 1,2]	2
Prop. Delay (ns), Limit 555	[Pair 1,2]	2
Delay Skew (ns), Limit 50	[Pair 1,2]	0
Resistance (ohms), Limit 25.00	[Pair 1,2]	0.31
Insertion Loss Margin (dB)	[Pair 3,6]	35.6
Frequency (MHz)	[Pair 3,6]	250.0
Limit (dB)	[Pair 3,6]	35.9



Worst Case Margin Worst Case Value

N/A	MAIN	SR	MAIN	SR
Worst Pair	3,6-4,5	3,6-4,5	3,6-4,5	3,6-4,5
<b>NEXT (dB)</b>	16.0	14.5	37.9	37.3
Freq. (MHz)	4.9	3.0	236.0	235.0
Limit (dB)	61.7	65.0	33.5	33.6
Worst Pair	3,6	3,6	3,6	3,6
<b>PS NEXT (dB)</b>	17.5	15.8	40.0	39.5
Freq. (MHz)	4.4	3.3	236.0	235.0
Limit (dB)	59.9	62.0	30.6	30.6

PASS	MAIN	SR	MAIN	SR
Worst Pair	4,5-3,6	3,6-4,5	4,5-3,6	3,6-4,5
<b>ACR-F (dB)</b>	19.4	19.5	23.8	20.6
Freq. (MHz)	139.5	139.5	250.0	170.0
Limit (dB)	20.4	20.4	15.3	18.6
Worst Pair	3,6	3,6	3,6	3,6
<b>PS ACR-F (dB)</b>	21.4	21.4	25.5	25.5
Freq. (MHz)	139.5	135.0	250.0	250.0
Limit (dB)	17.4	17.7	12.3	12.3

PASS	MAIN	SR	MAIN	SR
Worst Pair	3,6-4,5	3,6-4,5	3,6-4,5	3,6-4,5
<b>ACR-N (dB)</b>	20.2	18.5	72.5	71.9
Freq. (MHz)	3.0	3.0	236.0	235.0
Limit (dB)	61.0	61.0	-1.2	-1.1
Worst Pair	3,6	3,6	3,6	3,6
<b>PS ACR-N (dB)</b>	21.6	19.8	74.5	73.9
Freq. (MHz)	3.4	3.3	236.0	235.0
Limit (dB)	57.7	58.0	-4.2	-4.1

N/A	MAIN	SR	MAIN	SR
Worst Pair	4,5	3,6	4,5	4,5
<b>RL (dB)</b>	17.9	15.6	21.7	20.2
Freq. (MHz)	65.3	58.0	239.0	221.5
Limit (dB)	13.9	14.4	8.2	8.5

Compliant Network Standards:  
 10BASE-T      100BASE-TX      100BASE-T4  
 1000BASE-T    2.5GBASE-T      5GBASE-T  
 ATM-25        ATM-51            ATM-155  
 100VG-AnyLan    TR-4              TR-16 Active  
 TR-16 Passive