

Cable ID/ Test ID	Summary	Test Limit	Length	Headroom	Date / Time
PCU6-10CU-0500-S-001	PASS	ISO11801 Channel Class E	16 ft	10.0 dB (NEXT)	10/20/2025 08:38 AM
PCU6-10CU-0500-S-002	PASS	ISO11801 Channel Class E	16 ft	12.4 dB (NEXT)	10/20/2025 08:40 AM
PCU6-10CU-0500-S-003	PASS	ISO11801 Channel Class E	16 ft	11.3 dB (NEXT)	10/20/2025 08:41 AM
PCU6-10CU-0500-S-004	PASS	ISO11801 Channel Class E	16 ft	11.6 dB (NEXT)	10/20/2025 08:42 AM
PCU6-10CU-0500-S-005	PASS	ISO11801 Channel Class E	16 ft	13.8 dB (NEXT)	10/20/2025 08:42 AM
PCU6-10CU-0500-S-006	PASS	ISO11801 Channel Class E	16 ft	12.2 dB (NEXT)	10/20/2025 08:43 AM
PCU6-10CU-0500-S-007	PASS	ISO11801 Channel Class E	16 ft	11.0 dB (NEXT)	10/20/2025 08:44 AM
PCU6-10CU-0500-S-008	PASS	ISO11801 Channel Class E	16 ft	12.2 dB (NEXT)	10/20/2025 08:45 AM
PCU6-10CU-0500-S-009	PASS	ISO11801 Channel Class E	16 ft	14.3 dB (NEXT)	10/20/2025 08:45 AM
PCU6-10CU-0500-S-010	PASS	ISO11801 Channel Class E	16 ft	13.4 dB (NEXT)	10/20/2025 08:46 AM

Total Length:	160 ft
Number of Reports:	10
Number of Passing Reports:	10
Number of Failing Reports:	0
Number of Warning Reports:	0
Documentation Only:	0



Cable ID/ Test ID: PCU6-10CU-0500-S-001

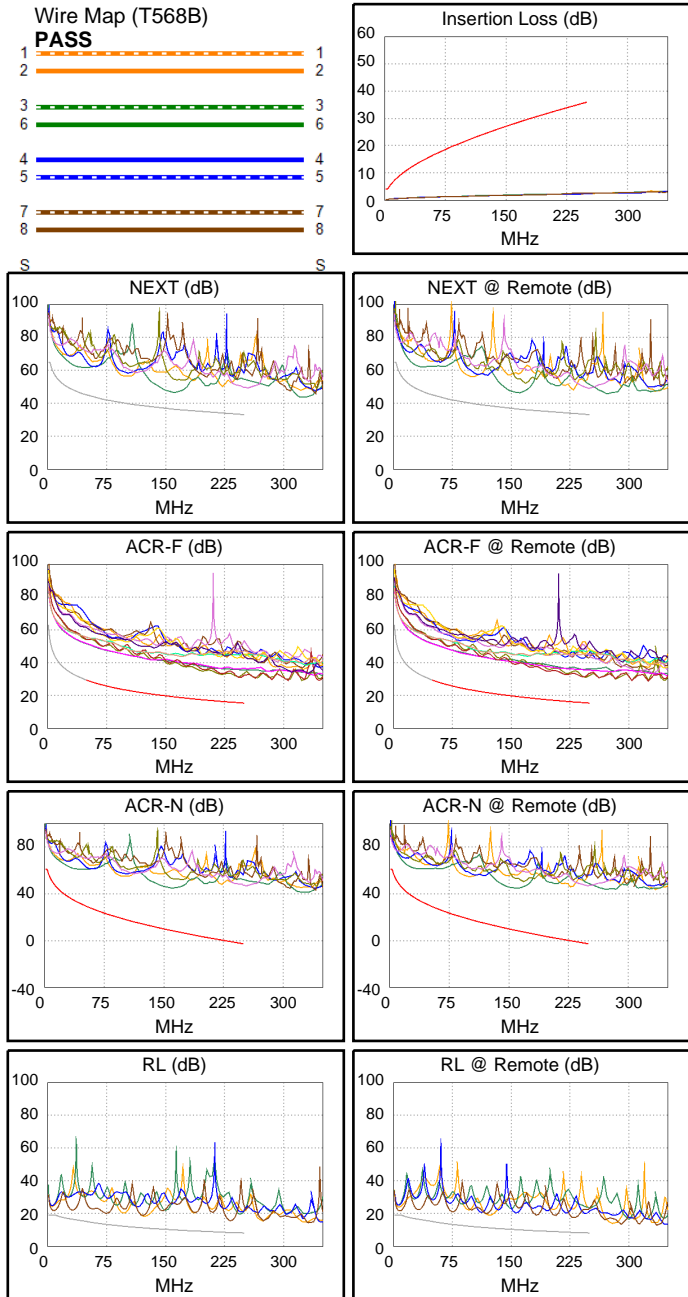
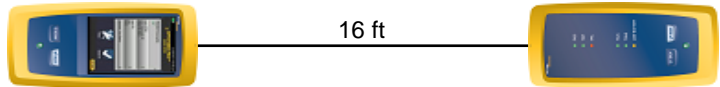
Test Limit: ISO11801 Channel Class E
Limits Version: V7.11
Date / Time: 10/20/2025 08:38:13 AM
Operator: Impakt S.A - Serwis
Headroom 10.0 dB (NEXT 1,2-4,5)
Cable Type: Cat 6 U/UTP
NVP: 69.0%

Main: Versiv
S/N: 24410021
Software Version: V6.13 Build 2
Calibration Date: 05/28/2025
Adapter: DSX-602 (DSX-CHA004)
S/N: 25073277

Test Summary: PASS

Remote: Versiv
S/N: 24250049
Software Version: V6.13 Build 2
Calibration Date: 05/28/2025
Adapter: DSX-602R (DSX-CHA004)
S/N: 25073276

Length (ft), Limit 328	[Pair 1,2]	16
Prop. Delay (ns), Limit 555	[Pair 3,6]	24
Delay Skew (ns), Limit 50	[Pair 1,2]	0
Resistance (ohms), Limit 25.00	[Pair 1,2]	1.21
Insertion Loss Margin (dB)	[Pair 3,6]	33.5
Frequency (MHz)	[Pair 3,6]	250.0
Limit (dB)	[Pair 3,6]	35.9



	Worst Case Margin		Worst Case Value	
	MAIN	SR	MAIN	SR
N/A				
Worst Pair	1,2-4,5	1,2-4,5	1,2-4,5	1,2-4,5
NEXT (dB)	10.2	10.0	10.2	10.0
Freq. (MHz)	161.5	161.0	161.5	161.0
Limit (dB)	36.4	36.4	36.4	36.4
Worst Pair	1,2	1,2	1,2	1,2
PS NEXT (dB)	13.0	12.5	13.0	12.6
Freq. (MHz)	161.5	159.5	161.5	161.0
Limit (dB)	33.5	33.6	33.5	33.5
PASS				
Worst Pair	4,5-3,6	3,6-4,5	4,5-3,6	3,6-4,5
ACR-F (dB)	15.5	15.5	15.5	15.5
Freq. (MHz)	245.0	245.0	245.0	245.0
Limit (dB)	15.5	15.5	15.5	15.5
Worst Pair	4,5	4,5	4,5	4,5
PS ACR-F (dB)	17.3	17.2	17.3	17.2
Freq. (MHz)	242.5	245.0	242.5	245.0
Limit (dB)	12.6	12.5	12.6	12.5
PASS				
Worst Pair	1,2-4,5	4,5-7,8	1,2-4,5	1,2-4,5
ACR-N (dB)	23.5	22.7	36.9	36.4
Freq. (MHz)	7.8	3.8	163.0	161.0
Limit (dB)	52.6	59.4	8.0	8.3
Worst Pair	7,8	4,5	1,2	4,5
PS ACR-N (dB)	23.1	23.3	39.5	50.0
Freq. (MHz)	3.6	3.8	161.5	249.5
Limit (dB)	57.2	56.9	5.3	-5.7
N/A				
Worst Pair	7,8	7,8	7,8	7,8
RL (dB)	2.8	2.6	7.2	8.9
Freq. (MHz)	8.9	9.3	233.5	230.5
Limit (dB)	19.0	19.0	8.3	8.4

Compliant Network Standards:
 10BASE-T 100BASE-TX 100BASE-T4
 1000BASE-T 2.5GBASE-T 5GBASE-T
 ATM-25 ATM-51 ATM-155
 100VG-AnyLan TR-4 TR-16 Active
 TR-16 Passive



Cable ID/ Test ID: PCU6-10CU-0500-S-002

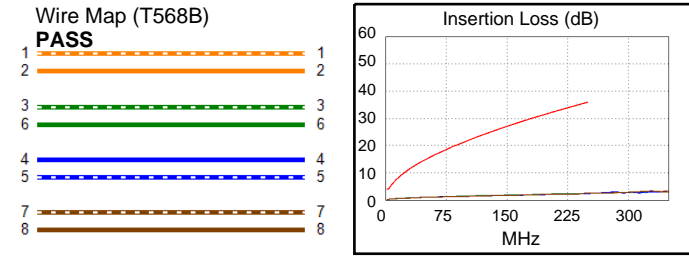
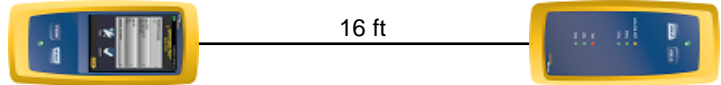
Test Limit: ISO11801 Channel Class E
Limits Version: V7.11
Date / Time: 10/20/2025 08:40:51 AM
Operator: Impakt S.A - Serwis
Headroom 12.4 dB (NEXT 1,2-4,5)
Cable Type: Cat 6 U/UTP
NVP: 69.0%

Main: Versiv
S/N: 24410021
Software Version: V6.13 Build 2
Calibration Date: 05/28/2025
Adapter: DSX-602 (DSX-CHA004)
S/N: 25073277

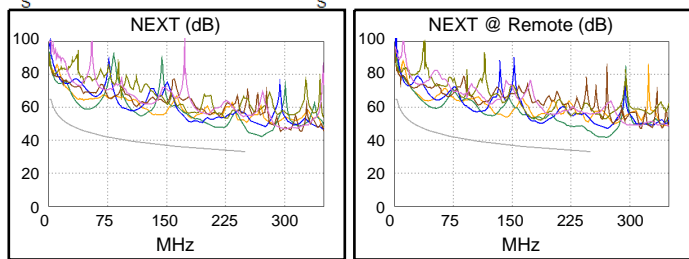
Test Summary: PASS

Remote: Versiv
S/N: 24250049
Software Version: V6.13 Build 2
Calibration Date: 05/28/2025
Adapter: DSX-602R (DSX-CHA004)
S/N: 25073276

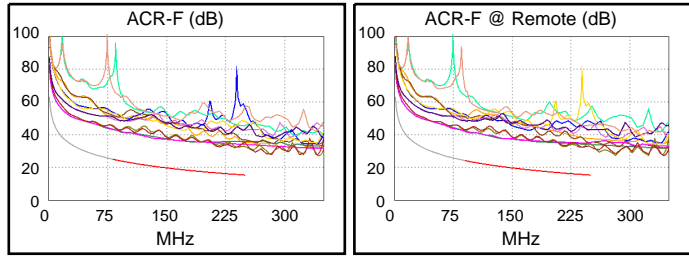
Length (ft), Limit 328	[Pair 1,2]	16
Prop. Delay (ns), Limit 555	[Pair 3,6]	25
Delay Skew (ns), Limit 50	[Pair 3,6]	1
Resistance (ohms), Limit 25.00	[Pair 7,8]	1.29
Insertion Loss Margin (dB)	[Pair 7,8]	33.3
Frequency (MHz)	[Pair 7,8]	250.0
Limit (dB)	[Pair 7,8]	35.9



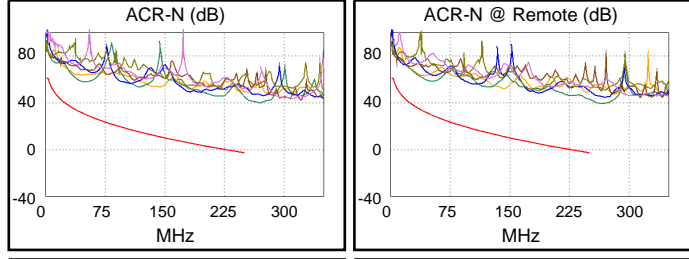
	Worst Case Margin		Worst Case Value	
N/A	MAIN	SR	MAIN	SR
Worst Pair	1,2-4,5	1,2-4,5	1,2-4,5	1,2-4,5
NEXT (dB)	13.4	12.4	14.6	12.4
Freq. (MHz)	45.8	250.0	250.0	250.0
Limit (dB)	45.7	33.1	33.1	33.1
Worst Pair	1,2	1,2	1,2	1,2
PS NEXT (dB)	14.9	13.9	15.6	13.9
Freq. (MHz)	219.0	250.0	250.0	250.0
Limit (dB)	31.2	30.2	30.2	30.2



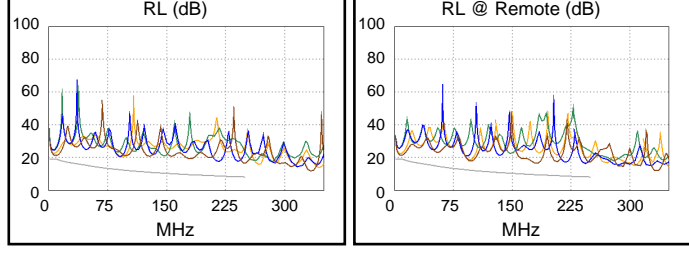
PASS	MAIN	SR	MAIN	SR
Worst Pair	4,5-3,6	3,6-4,5	4,5-3,6	3,6-4,5
ACR-F (dB)	16.0	16.1	16.4	16.5
Freq. (MHz)	216.0	216.0	236.0	238.5
Limit (dB)	16.6	16.6	15.8	15.7
Worst Pair	4,5	4,5	4,5	4,5
PS ACR-F (dB)	17.3	17.2	17.7	17.5
Freq. (MHz)	26.0	218.0	242.0	238.5
Limit (dB)	32.0	13.5	12.6	12.7



PASS	MAIN	SR	MAIN	SR
Worst Pair	1,2-3,6	3,6-4,5	1,2-4,5	1,2-4,5
ACR-N (dB)	21.8	21.4	48.2	46.0
Freq. (MHz)	3.3	2.9	250.0	250.0
Limit (dB)	60.5	61.0	-2.8	-2.8
Worst Pair	3,6	3,6	1,2	1,2
PS ACR-N (dB)	20.4	20.1	49.3	47.6
Freq. (MHz)	3.3	3.3	250.0	250.0
Limit (dB)	58.0	58.0	-5.8	-5.8



N/A	MAIN	SR	MAIN	SR
Worst Pair	7,8	7,8	7,8	4,5
RL (dB)	2.1	2.2	8.5	8.2
Freq. (MHz)	9.4	8.8	250.0	244.5
Limit (dB)	19.0	19.0	8.0	8.1



Compliant Network Standards:
 10BASE-T 100BASE-TX 100BASE-T4
 1000BASE-T 2.5GBASE-T 5GBASE-T
 ATM-25 ATM-51 ATM-155
 100VG-AnyLan TR-4 TR-16 Active
 TR-16 Passive



Cable ID/ Test ID: PCU6-10CU-0500-S-003

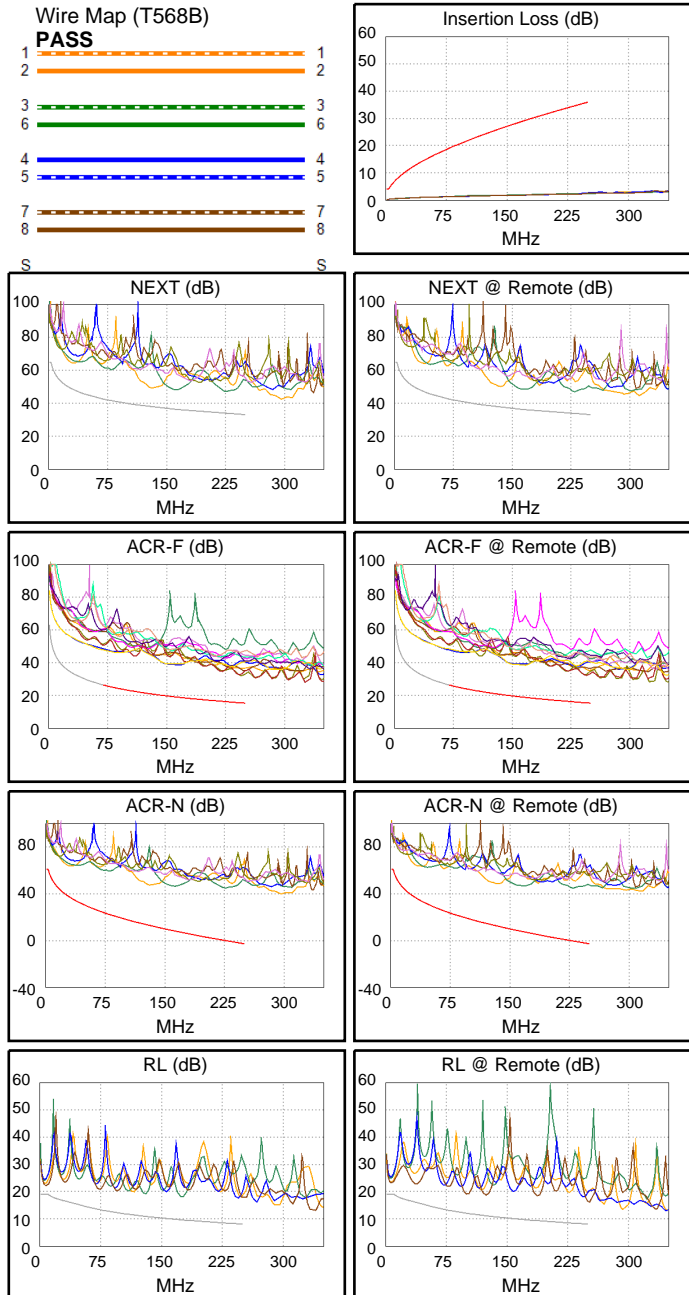
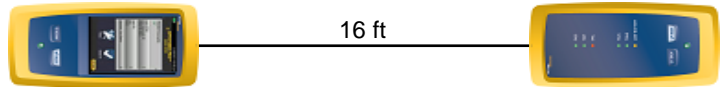
Test Limit: ISO11801 Channel Class E
Limits Version: V7.11
Date / Time: 10/20/2025 08:41:42 AM
Operator: Impakt S.A - Serwis
Headroom 11.3 dB (NEXT 1,2-3,6)
Cable Type: Cat 6 U/UTP
NVP: 69.0%

Main: Versiv
S/N: 24410021
Software Version: V6.13 Build 2
Calibration Date: 05/28/2025
Adapter: DSX-602 (DSX-CHA004)
S/N: 25073277

Test Summary: PASS

Remote: Versiv
S/N: 24250049
Software Version: V6.13 Build 2
Calibration Date: 05/28/2025
Adapter: DSX-602R (DSX-CHA004)
S/N: 25073276

Length (ft), Limit 328	[Pair 1,2]	16
Prop. Delay (ns), Limit 555	[Pair 3,6]	24
Delay Skew (ns), Limit 50	[Pair 1,2]	0
Resistance (ohms), Limit 25.00	[Pair 7,8]	1.32
Insertion Loss Margin (dB)	[Pair 4,5]	33.3
Frequency (MHz)	[Pair 4,5]	249.0
Limit (dB)	[Pair 4,5]	35.9



Worst Case Margin Worst Case Value

N/A	MAIN	SR	MAIN	SR
Worst Pair	1,2-3,6	1,2-4,5	1,2-4,5	1,2-4,5
NEXT (dB)	11.3	12.4	13.2	13.3
Freq. (MHz)	131.0	164.0	226.0	230.5
Limit (dB)	37.9	36.3	33.9	33.7
Worst Pair	1,2	4,5	1,2	1,2
PS NEXT (dB)	14.1	14.3	15.2	15.2
Freq. (MHz)	131.0	169.5	233.5	230.5
Limit (dB)	35.0	33.1	30.7	30.8

PASS	MAIN	SR	MAIN	SR
Worst Pair	3,6-4,5	4,5-3,6	3,6-4,5	4,5-3,6
ACR-F (dB)	16.5	16.7	16.5	16.7
Freq. (MHz)	244.5	244.5	244.5	244.5
Limit (dB)	15.5	15.5	15.5	15.5
Worst Pair	3,6	3,6	3,6	3,6
PS ACR-F (dB)	18.6	18.1	18.7	18.1
Freq. (MHz)	242.5	247.0	245.0	247.0
Limit (dB)	12.6	12.4	12.5	12.4

PASS	MAIN	SR	MAIN	SR
Worst Pair	3,6-4,5	3,6-4,5	1,2-4,5	1,2-4,5
ACR-N (dB)	25.6	25.0	45.0	45.4
Freq. (MHz)	3.6	2.9	226.0	230.5
Limit (dB)	59.7	61.0	-0.1	-0.6
Worst Pair	3,6	3,6	1,2	1,2
PS ACR-N (dB)	25.0	25.7	47.6	47.3
Freq. (MHz)	3.6	3.5	233.5	230.5
Limit (dB)	57.2	57.5	-3.9	-3.6

N/A	MAIN	SR	MAIN	SR
Worst Pair	7,8	7,8	4,5	7,8
RL (dB)	3.1	4.2	9.5	8.4
Freq. (MHz)	8.1	7.6	245.0	250.0
Limit (dB)	19.0	19.0	8.1	8.0

Compliant Network Standards:
 10BASE-T 100BASE-TX 100BASE-T4
 1000BASE-T 2.5GBASE-T 5GBASE-T
 ATM-25 ATM-51 ATM-155
 100VG-AnyLan TR-4 TR-16 Active
 TR-16 Passive



Cable ID/ Test ID: PCU6-10CU-0500-S-004

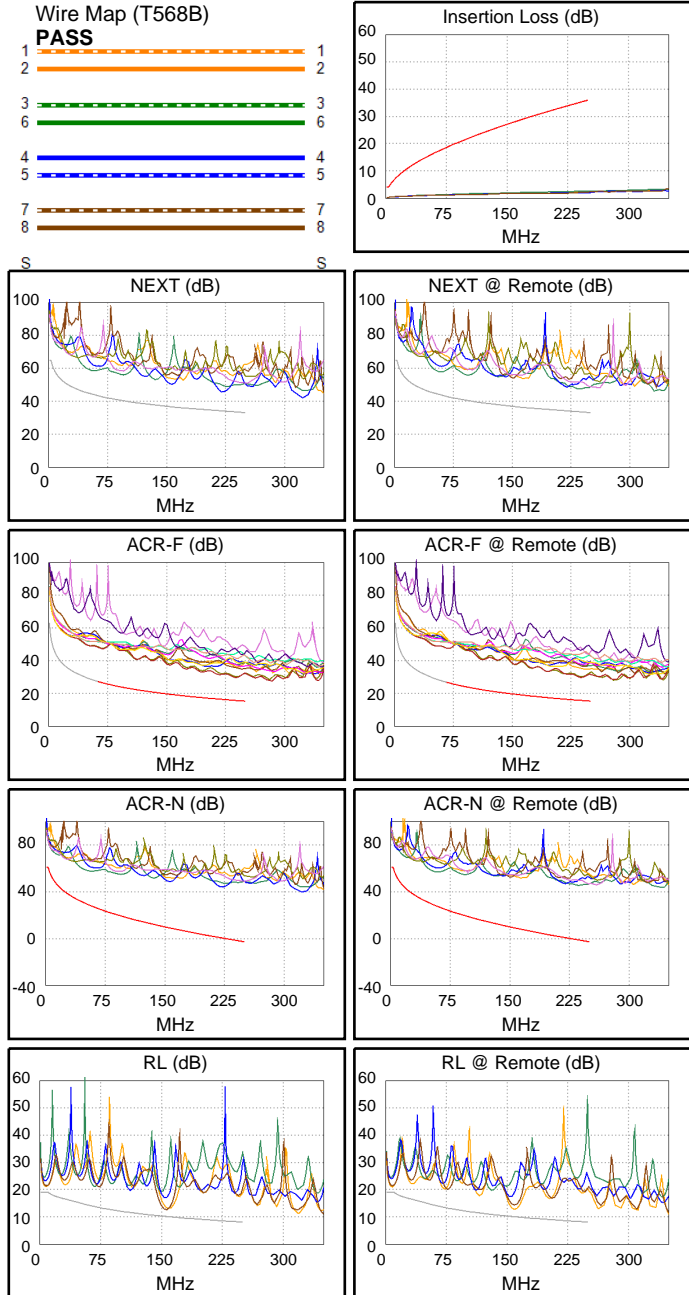
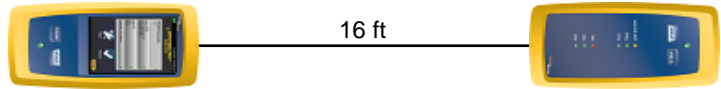
Test Limit: ISO11801 Channel Class E
Limits Version: V7.11
Date / Time: 10/20/2025 08:42:17 AM
Operator: Impakt S.A - Serwis
Headroom 11.6 dB (NEXT 1,2-7,8)
Cable Type: Cat 6 U/UTP
NVP: 69.0%

Main: Versiv
S/N: 24410021
Software Version: V6.13 Build 2
Calibration Date: 05/28/2025
Adapter: DSX-602 (DSX-CHA004)
S/N: 25073277

Test Summary: PASS

Remote: Versiv
S/N: 24250049
Software Version: V6.13 Build 2
Calibration Date: 05/28/2025
Adapter: DSX-602R (DSX-CHA004)
S/N: 25073276

Length (ft), Limit 328	[Pair 1,2]	16
Prop. Delay (ns), Limit 555	[Pair 3,6]	25
Delay Skew (ns), Limit 50	[Pair 3,6]	1
Resistance (ohms), Limit 25.00	[Pair 7,8]	1.29
Insertion Loss Margin (dB)	[Pair 3,6]	33.4
Frequency (MHz)	[Pair 3,6]	250.0
Limit (dB)	[Pair 3,6]	35.9



Worst Case Margin Worst Case Value

N/A	MAIN	SR	MAIN	SR
Worst Pair	1,2-7,8	1,2-4,5	1,2-7,8	1,2-4,5
NEXT (dB)	11.6	13.8	11.6	13.9
Freq. (MHz)	221.5	235.5	221.5	237.5
Limit (dB)	34.0	33.6	34.0	33.5
Worst Pair	1,2	1,2	1,2	4,5
PS NEXT (dB)	12.9	14.8	12.9	15.3
Freq. (MHz)	221.5	222.0	221.5	249.0
Limit (dB)	31.1	31.1	31.1	30.2

PASS	MAIN	SR	MAIN	SR
Worst Pair	4,5-3,6	4,5-3,6	4,5-3,6	4,5-3,6
ACR-F (dB)	13.9	14.0	14.0	14.1
Freq. (MHz)	237.0	237.0	239.0	240.0
Limit (dB)	15.8	15.8	15.7	15.7
Worst Pair	3,6	3,6	3,6	3,6
PS ACR-F (dB)	16.0	15.9	16.0	15.9
Freq. (MHz)	239.0	240.0	239.0	240.0
Limit (dB)	12.7	12.7	12.7	12.7

PASS	MAIN	SR	MAIN	SR
Worst Pair	1,2-4,5	3,6-7,8	1,2-7,8	1,2-4,5
ACR-N (dB)	21.5	22.1	43.5	47.0
Freq. (MHz)	4.4	3.0	221.5	238.5
Limit (dB)	58.0	61.0	0.4	-1.5
Worst Pair	4,5	7,8	1,2	4,5
PS ACR-N (dB)	20.0	20.9	44.7	48.8
Freq. (MHz)	4.3	3.3	221.5	247.0
Limit (dB)	55.8	58.0	-2.5	-5.4

N/A	MAIN	SR	MAIN	SR
Worst Pair	1,2	1,2	7,8	1,2
RL (dB)	2.1	2.0	2.5	2.7
Freq. (MHz)	7.8	8.9	156.5	160.0
Limit (dB)	19.0	19.0	10.1	10.0

Compliant Network Standards:
 10BASE-T 100BASE-TX 100BASE-T4
 1000BASE-T 2.5GBASE-T 5GBASE-T
 ATM-25 ATM-51 ATM-155
 100VG-AnyLan TR-4 TR-16 Active
 TR-16 Passive



Cable ID/ Test ID: PCU6-10CU-0500-S-005

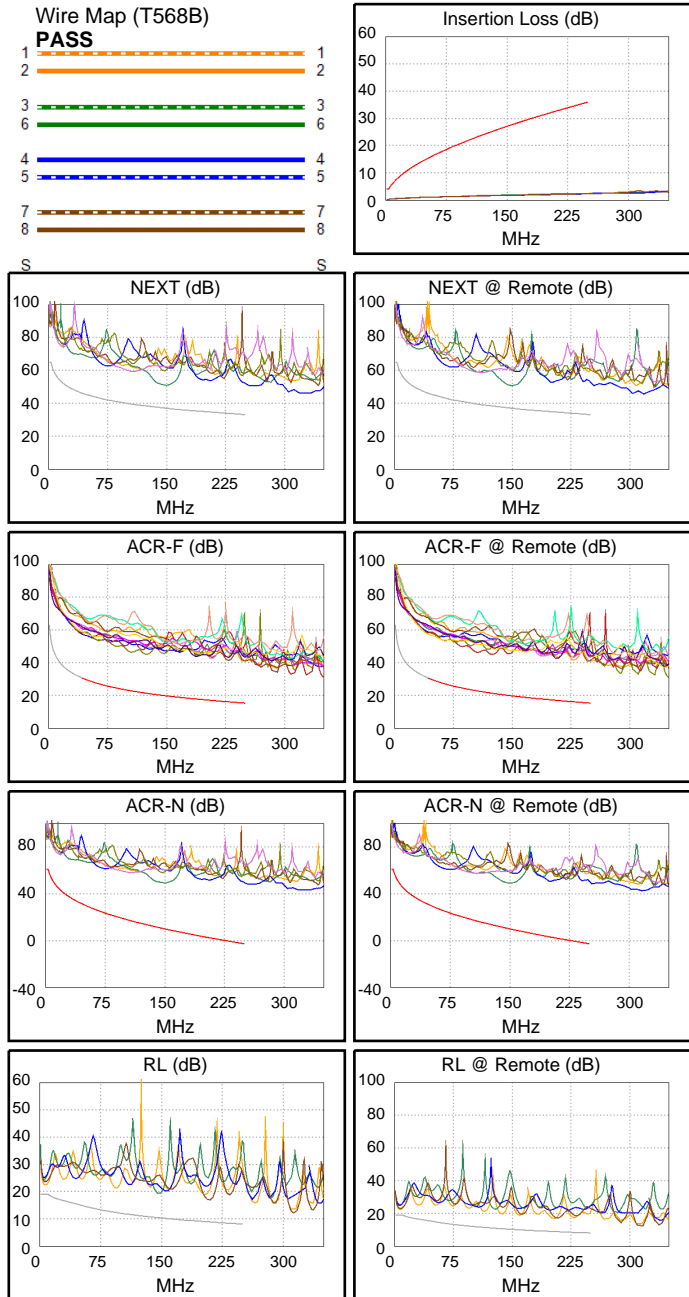
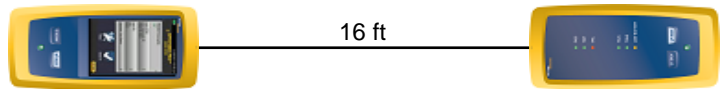
Test Limit: ISO11801 Channel Class E
Limits Version: V7.11
Date / Time: 10/20/2025 08:42:55 AM
Operator: Impakt S.A - Serwis
Headroom 13.8 dB (NEXT 1,2-4,5)
Cable Type: Cat 6 U/UTP
NVP: 69.0%

Main: Versiv
S/N: 24410021
Software Version: V6.13 Build 2
Calibration Date: 05/28/2025
Adapter: DSX-602 (DSX-CHA004)
S/N: 25073277

Test Summary: PASS

Remote: Versiv
S/N: 24250049
Software Version: V6.13 Build 2
Calibration Date: 05/28/2025
Adapter: DSX-602R (DSX-CHA004)
S/N: 25073276

Length (ft), Limit 328	[Pair 1,2]	16
Prop. Delay (ns), Limit 555	[Pair 3,6]	25
Delay Skew (ns), Limit 50	[Pair 3,6]	1
Resistance (ohms), Limit 25.00	[Pair 4,5]	1.36
Insertion Loss Margin (dB)	[Pair 1,2]	33.5
Frequency (MHz)	[Pair 1,2]	250.0
Limit (dB)	[Pair 1,2]	35.9



Worst Case Margin Worst Case Value

N/A	MAIN	SR	MAIN	SR
Worst Pair	1,2-4,5	1,2-4,5	1,2-4,5	1,2-4,5
NEXT (dB)	13.9	13.8	14.0	13.8
Freq. (MHz)	149.5	149.5	151.0	149.5
Limit (dB)	37.0	37.0	36.9	37.0

Worst Pair	4,5	1,2	1,2	1,2
PS NEXT (dB)	16.4	16.2	20.3	16.2
Freq. (MHz)	149.5	149.5	250.0	149.5
Limit (dB)	34.1	34.1	30.2	34.1

PASS	MAIN	SR	MAIN	SR
Worst Pair	3,6-4,5	4,5-3,6	1,2-3,6	3,6-1,2
ACR-F (dB)	23.5	23.4	25.5	25.4
Freq. (MHz)	106.0	106.0	248.0	248.0
Limit (dB)	22.8	22.8	15.4	15.4

Worst Pair	4,5	3,6	3,6	1,2
PS ACR-F (dB)	25.4	25.1	26.2	26.0
Freq. (MHz)	124.5	125.5	248.0	250.0
Limit (dB)	18.4	18.3	12.4	12.3

PASS	MAIN	SR	MAIN	SR
Worst Pair	3,6-4,5	3,6-4,5	1,2-4,5	1,2-4,5
ACR-N (dB)	26.4	26.8	39.5	39.2
Freq. (MHz)	3.0	3.0	151.0	149.5
Limit (dB)	61.0	61.0	9.7	9.9

Worst Pair	7,8	3,6	1,2	1,2
PS ACR-N (dB)	27.6	26.9	53.9	41.6
Freq. (MHz)	11.9	3.0	250.0	149.5
Limit (dB)	45.6	58.0	-5.8	7.0

N/A	MAIN	SR	MAIN	SR
Worst Pair	1,2	1,2	7,8	1,2
RL (dB)	3.3	3.4	8.0	7.8
Freq. (MHz)	6.8	8.1	209.5	203.5
Limit (dB)	19.0	19.0	8.8	8.9

Compliant Network Standards:
 10BASE-T 100BASE-TX 100BASE-T4
 1000BASE-T 2.5GBASE-T 5GBASE-T
 ATM-25 ATM-51 ATM-155
 100VG-AnyLan TR-4 TR-16 Active
 TR-16 Passive



Cable ID/ Test ID: PCU6-10CU-0500-S-006

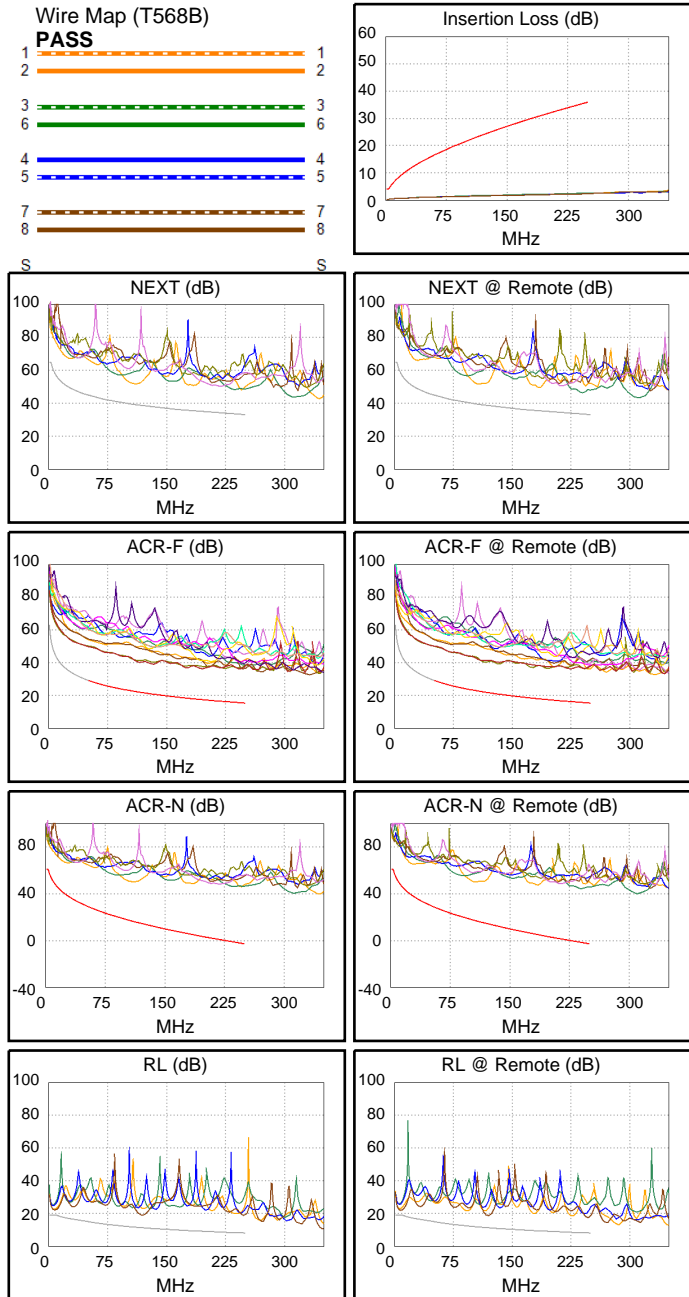
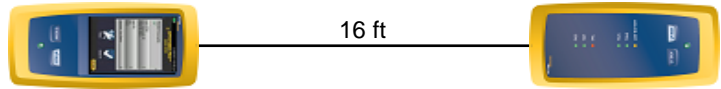
Test Limit: ISO11801 Channel Class E
Limits Version: V7.11
Date / Time: 10/20/2025 08:43:39 AM
Operator: Impakt S.A - Serwis
Headroom 12.2 dB (NEXT 1,2-3,6)
Cable Type: Cat 6 U/UTP
NVP: 69.0%

Main: Versiv
S/N: 24410021
Software Version: V6.13 Build 2
Calibration Date: 05/28/2025
Adapter: DSX-602 (DSX-CHA004)
S/N: 25073277

Test Summary: PASS

Remote: Versiv
S/N: 24250049
Software Version: V6.13 Build 2
Calibration Date: 05/28/2025
Adapter: DSX-602R (DSX-CHA004)
S/N: 25073276

Length (ft), Limit 328	[Pair 1,2]	16
Prop. Delay (ns), Limit 555	[Pair 3,6]	25
Delay Skew (ns), Limit 50	[Pair 3,6]	1
Resistance (ohms), Limit 25.00	[Pair 1,2]	1.25
Insertion Loss Margin (dB)	[Pair 3,6]	33.4
Frequency (MHz)	[Pair 3,6]	249.5
Limit (dB)	[Pair 3,6]	35.9



Worst Case Margin Worst Case Value

N/A	MAIN	SR	MAIN	SR
Worst Pair	1,2-3,6	1,2-3,6	1,2-3,6	1,2-4,5
NEXT (dB)	12.5	12.2	14.9	13.0
Freq. (MHz)	109.5	107.0	245.5	240.5
Limit (dB)	39.3	39.4	33.3	33.4
Worst Pair	1,2	1,2	1,2	1,2
PS NEXT (dB)	14.6	14.2	15.1	14.7
Freq. (MHz)	110.0	107.0	246.0	243.0
Limit (dB)	36.4	36.6	30.3	30.4

PASS	MAIN	SR	MAIN	SR
Worst Pair	4,5-3,6	3,6-4,5	3,6-1,2	1,2-3,6
ACR-F (dB)	18.2	18.3	20.9	20.8
Freq. (MHz)	116.0	116.0	249.0	249.0
Limit (dB)	22.0	22.0	15.3	15.3
Worst Pair	3,6	3,6	3,6	3,6
PS ACR-F (dB)	20.4	20.3	21.4	20.9
Freq. (MHz)	195.0	204.0	246.0	247.0
Limit (dB)	14.5	14.1	12.4	12.4

PASS	MAIN	SR	MAIN	SR
Worst Pair	1,2-3,6	3,6-4,5	1,2-3,6	1,2-4,5
ACR-N (dB)	22.3	25.8	48.1	46.0
Freq. (MHz)	3.4	3.0	245.5	240.5
Limit (dB)	60.2	61.0	-2.3	-1.8
Worst Pair	3,6	3,6	1,2	1,2
PS ACR-N (dB)	23.7	25.2	48.4	47.8
Freq. (MHz)	3.4	3.4	246.0	243.0
Limit (dB)	57.7	57.7	-5.3	-5.0

N/A	MAIN	SR	MAIN	SR
Worst Pair	7,8	7,8	7,8	7,8
RL (dB)	3.1	2.9	10.7	9.3
Freq. (MHz)	7.9	8.0	248.5	247.5
Limit (dB)	19.0	19.0	8.0	8.1

Compliant Network Standards:
 10BASE-T 100BASE-TX 100BASE-T4
 1000BASE-T 2.5GBASE-T 5GBASE-T
 ATM-25 ATM-51 ATM-155
 100VG-AnyLan TR-4 TR-16 Active
 TR-16 Passive



Cable ID/ Test ID: PCU6-10CU-0500-S-007

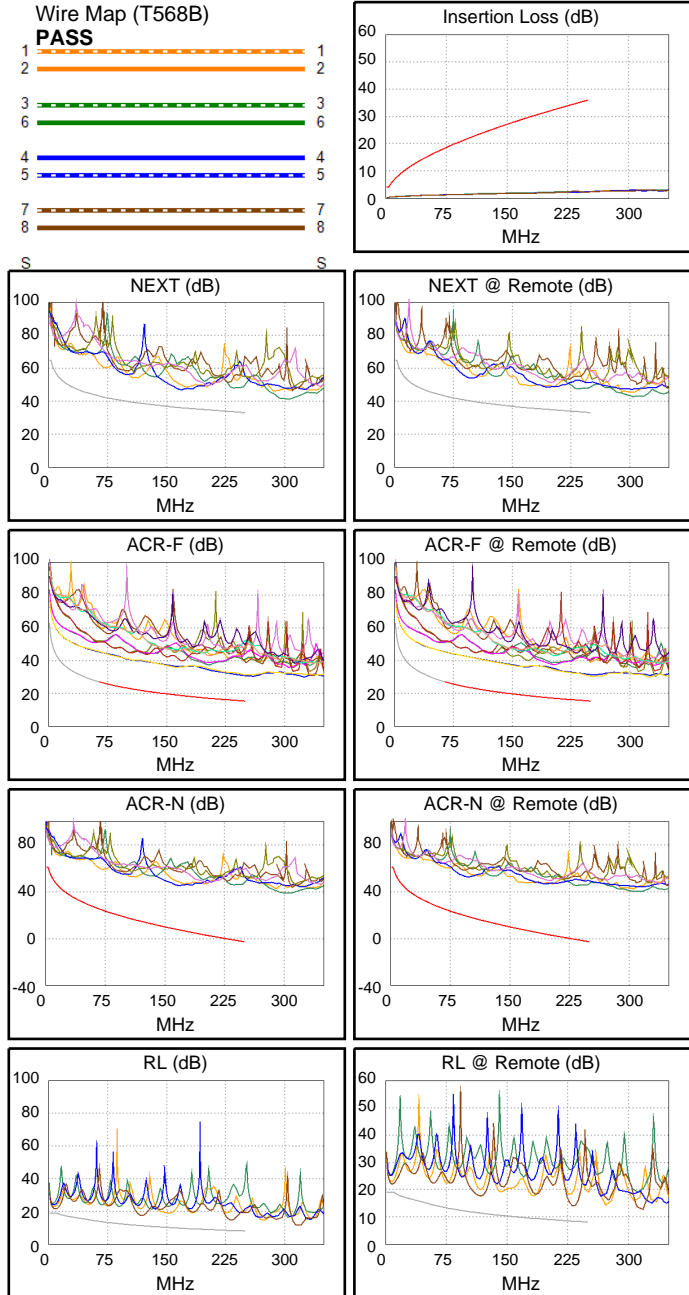
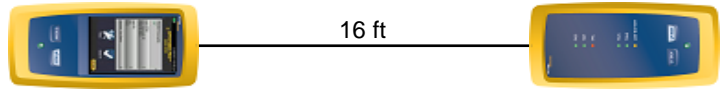
Test Limit: ISO11801 Channel Class E
Limits Version: V7.11
Date / Time: 10/20/2025 08:44:18 AM
Operator: Impakt S.A - Serwis
Headroom 11.0 dB (NEXT 1,2-7,8)
Cable Type: Cat 6 U/UTP
NVP: 69.0%

Main: Versiv
S/N: 24410021
Software Version: V6.13 Build 2
Calibration Date: 05/28/2025
Adapter: DSX-602 (DSX-CHA004)
S/N: 25073277

Test Summary: PASS

Remote: Versiv
S/N: 24250049
Software Version: V6.13 Build 2
Calibration Date: 05/28/2025
Adapter: DSX-602R (DSX-CHA004)
S/N: 25073276

Length (ft), Limit 328	[Pair 1,2]	16
Prop. Delay (ns), Limit 555	[Pair 3,6]	24
Delay Skew (ns), Limit 50	[Pair 1,2]	0
Resistance (ohms), Limit 25.00	[Pair 7,8]	1.29
Insertion Loss Margin (dB)	[Pair 7,8]	32.4
Frequency (MHz)	[Pair 7,8]	237.0
Limit (dB)	[Pair 7,8]	34.9



Worst Case Margin Worst Case Value

N/A	MAIN	SR	MAIN	SR
Worst Pair	1,2-7,8	1,2-7,8	1,2-7,8	1,2-4,5
NEXT (dB)	11.0	13.4	11.0	13.9
Freq. (MHz)	169.0	194.5	169.0	234.5
Limit (dB)	36.0	35.0	36.0	33.6
Worst Pair	1,2	1,2	1,2	1,2
PS NEXT (dB)	12.1	13.2	12.5	15.0
Freq. (MHz)	172.5	194.5	182.5	244.5
Limit (dB)	33.0	32.1	32.5	30.3

PASS	MAIN	SR	MAIN	SR
Worst Pair	1,2-7,8	7,8-1,2	1,2-7,8	7,8-1,2
ACR-F (dB)	15.4	15.2	15.4	15.2
Freq. (MHz)	250.0	250.0	250.0	250.0
Limit (dB)	15.3	15.3	15.3	15.3
Worst Pair	1,2	1,2	1,2	1,2
PS ACR-F (dB)	17.5	17.3	18.1	17.3
Freq. (MHz)	5.3	250.0	249.0	250.0
Limit (dB)	45.9	12.3	12.3	12.3

PASS	MAIN	SR	MAIN	SR
Worst Pair	3,6-4,5	3,6-7,8	1,2-7,8	1,2-4,5
ACR-N (dB)	23.7	20.9	38.2	46.5
Freq. (MHz)	7.8	3.1	169.0	234.5
Limit (dB)	52.6	60.8	7.1	-1.1
Worst Pair	4,5	7,8	1,2	1,2
PS ACR-N (dB)	23.2	19.8	40.8	48.3
Freq. (MHz)	7.8	3.3	182.5	244.5
Limit (dB)	50.0	58.0	2.4	-5.2

N/A	MAIN	SR	MAIN	SR
Worst Pair	7,8	7,8	7,8	7,8
RL (dB)	2.6	3.0	6.4	5.6
Freq. (MHz)	9.6	8.1	233.5	232.5
Limit (dB)	19.0	19.0	8.3	8.3

Compliant Network Standards:
 10BASE-T 100BASE-TX 100BASE-T4
 1000BASE-T 2.5GBASE-T 5GBASE-T
 ATM-25 ATM-51 ATM-155
 100VG-AnyLan TR-4 TR-16 Active
 TR-16 Passive



Cable ID/ Test ID: PCU6-10CU-0500-S-008

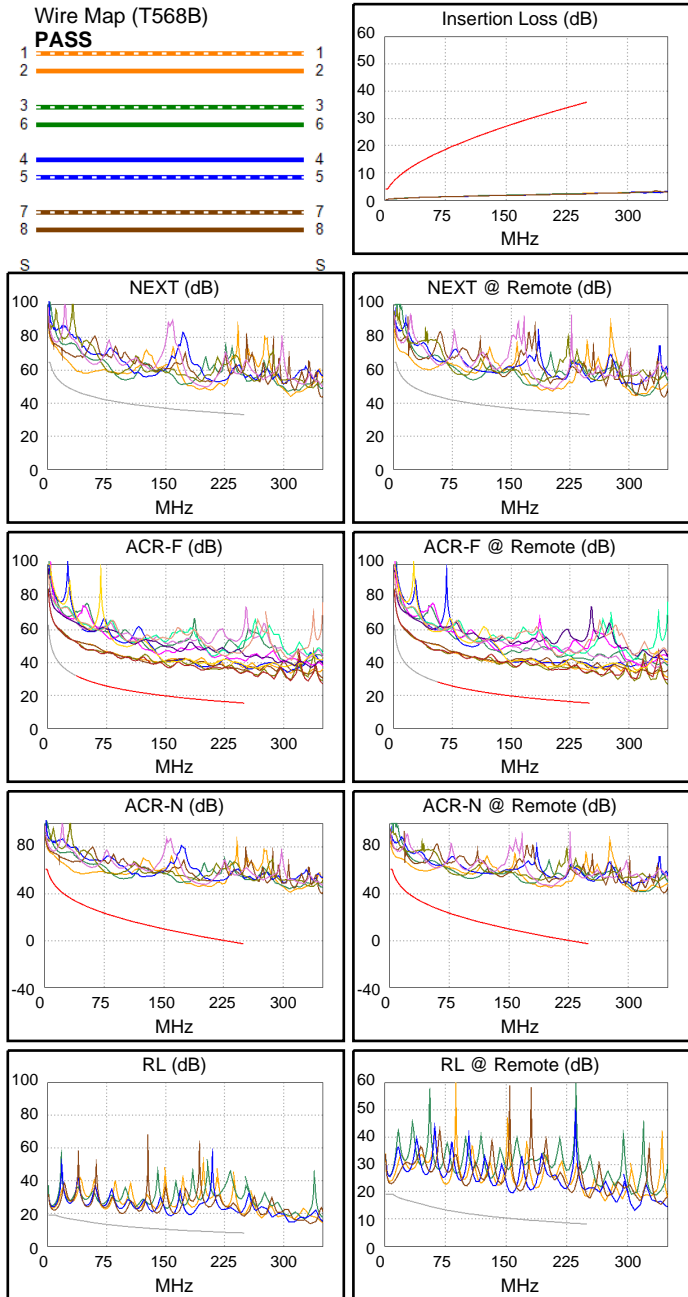
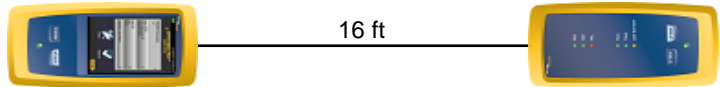
Test Limit: ISO11801 Channel Class E
Limits Version: V7.11
Date / Time: 10/20/2025 08:45:04 AM
Operator: Impakt S.A - Serwis
Headroom 12.2 dB (NEXT 1,2-3,6)
Cable Type: Cat 6 U/UTP
NVP: 69.0%

Main: Versiv
S/N: 24410021
Software Version: V6.13 Build 2
Calibration Date: 05/28/2025
Adapter: DSX-602 (DSX-CHA004)
S/N: 25073277

Test Summary: PASS

Remote: Versiv
S/N: 24250049
Software Version: V6.13 Build 2
Calibration Date: 05/28/2025
Adapter: DSX-602R (DSX-CHA004)
S/N: 25073276

Length (ft), Limit 328	[Pair 1,2]	16
Prop. Delay (ns), Limit 555	[Pair 3,6]	24
Delay Skew (ns), Limit 50	[Pair 1,2]	0
Resistance (ohms), Limit 25.00	[Pair 7,8]	1.29
Insertion Loss Margin (dB)	[Pair 1,2]	33.5
Frequency (MHz)	[Pair 1,2]	250.0
Limit (dB)	[Pair 1,2]	35.9



Worst Case Margin Worst Case Value

N/A	MAIN	SR	MAIN	SR
Worst Pair	1,2-3,6	1,2-3,6	1,2-3,6	1,2-3,6
NEXT (dB)	12.2	12.2	13.6	12.7
Freq. (MHz)	44.3	3.3	208.0	203.5
Limit (dB)	45.9	64.5	34.5	34.7
Worst Pair	3,6	3,6	3,6	3,6
PS NEXT (dB)	14.3	13.6	14.4	14.0
Freq. (MHz)	194.5	3.3	195.5	202.5
Limit (dB)	32.1	62.0	32.0	31.8

PASS	MAIN	SR	MAIN	SR
Worst Pair	4,5-3,6	3,6-4,5	4,5-3,6	3,6-4,5
ACR-F (dB)	17.5	17.6	18.1	18.1
Freq. (MHz)	155.0	155.0	247.0	247.0
Limit (dB)	19.5	19.5	15.4	15.4
Worst Pair	3,6	3,6	3,6	3,6
PS ACR-F (dB)	18.8	18.9	19.4	19.3
Freq. (MHz)	135.0	136.0	247.5	246.5
Limit (dB)	17.7	17.6	12.4	12.4

PASS	MAIN	SR	MAIN	SR
Worst Pair	1,2-3,6	1,2-3,6	1,2-3,6	1,2-3,6
ACR-N (dB)	18.2	16.0	43.8	42.7
Freq. (MHz)	3.1	3.3	208.0	203.5
Limit (dB)	60.8	60.5	2.1	2.6
Worst Pair	3,6	3,6	3,6	3,6
PS ACR-N (dB)	18.6	17.4	45.2	43.9
Freq. (MHz)	3.6	3.3	208.0	202.5
Limit (dB)	57.2	58.0	-0.9	-0.2

N/A	MAIN	SR	MAIN	SR
Worst Pair	7,8	7,8	7,8	1,2
RL (dB)	3.0	3.8	10.3	9.7
Freq. (MHz)	8.9	7.8	250.0	250.0
Limit (dB)	19.0	19.0	8.0	8.0

Compliant Network Standards:
 10BASE-T 100BASE-TX 100BASE-T4
 1000BASE-T 2.5GBASE-T 5GBASE-T
 ATM-25 ATM-51 ATM-155
 100VG-AnyLan TR-4 TR-16 Active
 TR-16 Passive



Cable ID/ Test ID: PCU6-10CU-0500-S-009

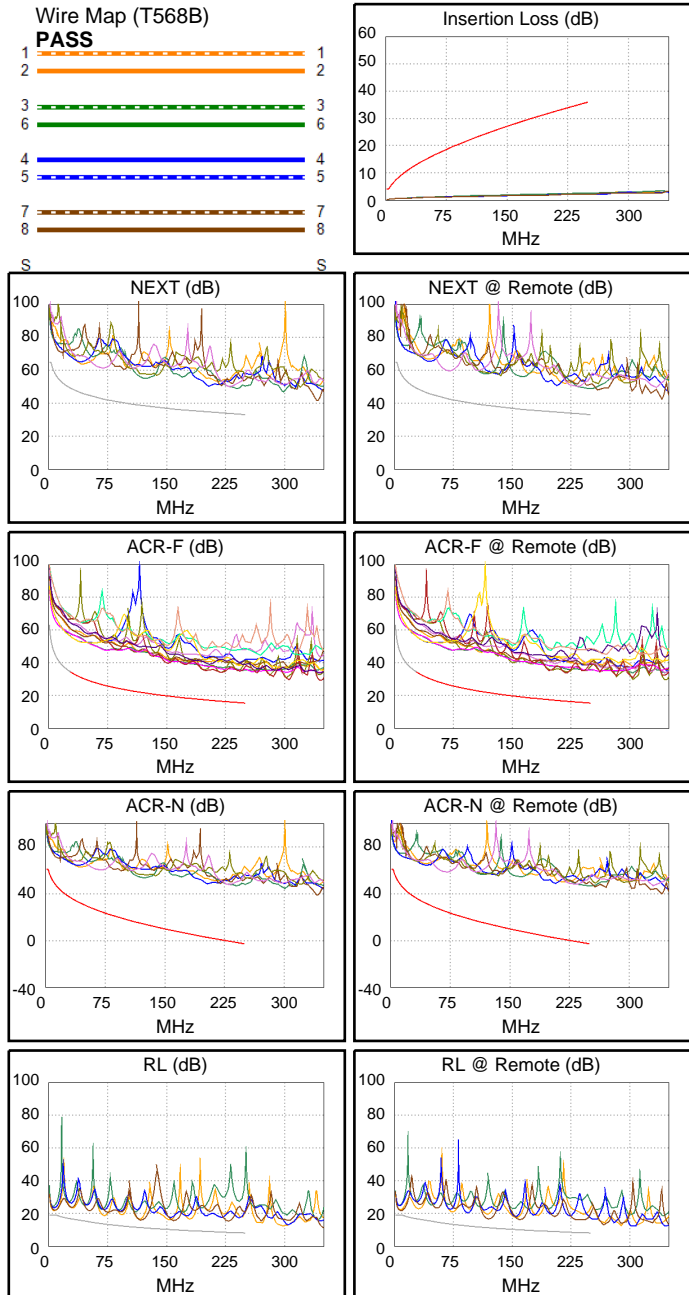
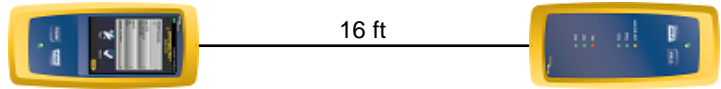
Test Limit: ISO11801 Channel Class E
Limits Version: V7.11
Date / Time: 10/20/2025 08:45:35 AM
Operator: Impakt S.A - Serwis
Headroom 14.3 dB (NEXT 3,6-4,5)
Cable Type: Cat 6 U/UTP
NVP: 69.0%

Main: Versiv
S/N: 24410021
Software Version: V6.13 Build 2
Calibration Date: 05/28/2025
Adapter: DSX-602 (DSX-CHA004)
S/N: 25073277

Test Summary: PASS

Remote: Versiv
S/N: 24250049
Software Version: V6.13 Build 2
Calibration Date: 05/28/2025
Adapter: DSX-602R (DSX-CHA004)
S/N: 25073276

Length (ft), Limit 328	[Pair 1,2]	16
Prop. Delay (ns), Limit 555	[Pair 3,6]	25
Delay Skew (ns), Limit 50	[Pair 3,6]	1
Resistance (ohms), Limit 25.00	[Pair 7,8]	1.29
Insertion Loss Margin (dB)	[Pair 3,6]	33.4
Frequency (MHz)	[Pair 3,6]	250.0
Limit (dB)	[Pair 3,6]	35.9



Worst Case Margin Worst Case Value

N/A	MAIN	SR	MAIN	SR
Worst Pair	3,6-4,5	1,2-4,5	1,2-4,5	1,2-4,5
NEXT (dB)	14.3	15.7	15.3	15.7
Freq. (MHz)	15.5	250.0	239.0	250.0
Limit (dB)	53.5	33.1	33.5	33.1
Worst Pair	4,5	4,5	4,5	4,5
PS NEXT (dB)	15.2	15.3	15.2	15.3
Freq. (MHz)	233.5	233.5	233.5	233.5
Limit (dB)	30.7	30.7	30.7	30.7

PASS	MAIN	SR	MAIN	SR
Worst Pair	3,6-4,5	4,5-3,6	3,6-4,5	4,5-3,6
ACR-F (dB)	17.5	17.2	17.6	17.3
Freq. (MHz)	218.5	218.5	219.5	219.5
Limit (dB)	16.5	16.5	16.4	16.4
Worst Pair	4,5	4,5	4,5	4,5
PS ACR-F (dB)	18.7	18.6	18.8	19.5
Freq. (MHz)	218.5	221.0	220.0	244.0
Limit (dB)	13.5	13.4	13.4	12.5

PASS	MAIN	SR	MAIN	SR
Worst Pair	3,6-4,5	1,2-4,5	1,2-4,5	1,2-4,5
ACR-N (dB)	22.0	21.5	48.7	49.4
Freq. (MHz)	15.5	3.1	241.5	250.0
Limit (dB)	45.3	60.8	-1.9	-2.8
Worst Pair	1,2	1,2	4,5	4,5
PS ACR-N (dB)	22.3	21.4	47.7	49.4
Freq. (MHz)	3.4	4.0	232.5	247.5
Limit (dB)	57.7	56.4	-3.8	-5.5

N/A	MAIN	SR	MAIN	SR
Worst Pair	1,2	7,8	7,8	7,8
RL (dB)	2.7	2.7	6.9	7.9
Freq. (MHz)	7.4	9.4	229.0	234.0
Limit (dB)	19.0	19.0	8.4	8.3

Compliant Network Standards:
 10BASE-T 100BASE-T4
 1000BASE-T 2.5GBASE-T 5GBASE-T
 ATM-25 ATM-51 ATM-155
 100VG-AnyLan TR-4 TR-16 Active
 TR-16 Passive



Cable ID/ Test ID: PCU6-10CU-0500-S-010

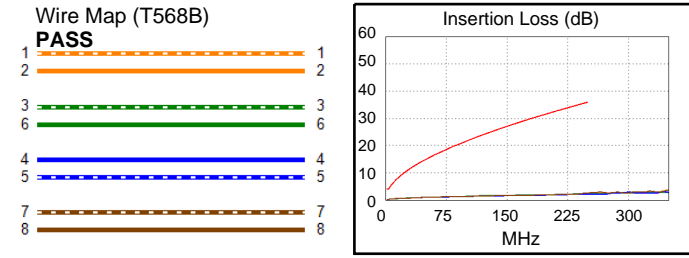
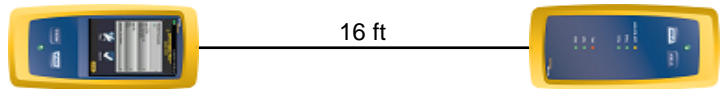
Test Limit: ISO11801 Channel Class E
Limits Version: V7.11
Date / Time: 10/20/2025 08:46:16 AM
Operator: Impakt S.A - Serwis
Headroom 13.4 dB (NEXT 1,2-4,5)
Cable Type: Cat 6 U/UTP
NVP: 69.0%

Main: Versiv
S/N: 24410021
Software Version: V6.13 Build 2
Calibration Date: 05/28/2025
Adapter: DSX-602 (DSX-CHA004)
S/N: 25073277

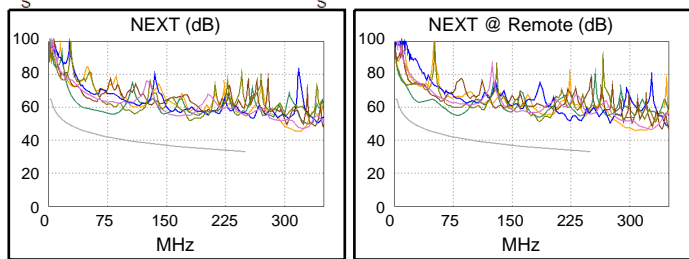
Test Summary: PASS

Remote: Versiv
S/N: 24250049
Software Version: V6.13 Build 2
Calibration Date: 05/28/2025
Adapter: DSX-602R (DSX-CHA004)
S/N: 25073276

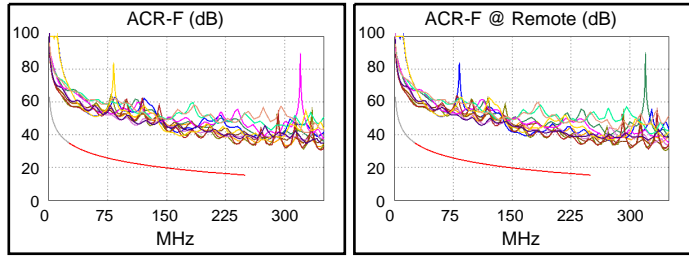
Length (ft), Limit 328	[Pair 1,2]	16
Prop. Delay (ns), Limit 555	[Pair 3,6]	25
Delay Skew (ns), Limit 50	[Pair 3,6]	1
Resistance (ohms), Limit 25.00	[Pair 1,2]	1.39
Insertion Loss Margin (dB)	[Pair 7,8]	33.2
Frequency (MHz)	[Pair 7,8]	247.5
Limit (dB)	[Pair 7,8]	35.7



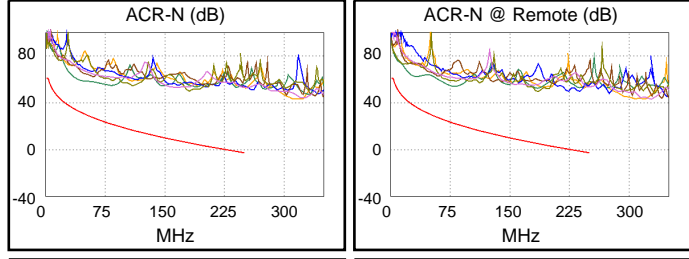
	Worst Case Margin		Worst Case Value	
N/A	MAIN	SR	MAIN	SR
Worst Pair	1,2-4,5	1,2-4,5	3,6-7,8	3,6-7,8
NEXT (dB)	14.0	13.4	16.2	16.0
Freq. (MHz)	41.5	78.0	180.5	185.5
Limit (dB)	46.4	41.8	35.5	35.3
Worst Pair	4,5	4,5	7,8	1,2
PS NEXT (dB)	15.7	15.5	16.9	18.9
Freq. (MHz)	48.5	78.8	179.5	237.0
Limit (dB)	42.5	38.9	32.7	30.6



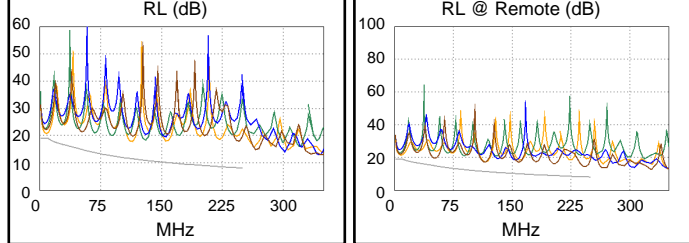
PASS	MAIN	SR	MAIN	SR
Worst Pair	4,5-3,6	4,5-3,6	4,5-3,6	4,5-3,6
ACR-F (dB)	18.5	18.4	18.6	18.5
Freq. (MHz)	240.0	237.0	241.0	239.5
Limit (dB)	15.7	15.8	15.6	15.7
Worst Pair	3,6	3,6	3,6	3,6
PS ACR-F (dB)	18.4	19.3	18.4	19.4
Freq. (MHz)	241.5	237.0	241.5	239.5
Limit (dB)	12.6	12.8	12.6	12.7



PASS	MAIN	SR	MAIN	SR
Worst Pair	1,2-4,5	1,2-4,5	3,6-7,8	3,6-7,8
ACR-N (dB)	26.8	22.9	44.3	44.6
Freq. (MHz)	41.5	3.5	180.5	185.5
Limit (dB)	32.8	60.0	5.6	4.9
Worst Pair	3,6	3,6	7,8	1,2
PS ACR-N (dB)	27.1	24.1	45.0	51.7
Freq. (MHz)	3.9	3.0	179.5	237.0
Limit (dB)	56.6	58.0	2.8	-4.3



N/A	MAIN	SR	MAIN	SR
Worst Pair	1,2	1,2	1,2	7,8
RL (dB)	1.7	2.4	6.2	6.2
Freq. (MHz)	8.0	8.9	113.5	243.5
Limit (dB)	19.0	19.0	11.5	8.1



Compliant Network Standards:
 10BASE-T 100BASE-TX 100BASE-T4
 1000BASE-T 2.5GBASE-T 5GBASE-T
 ATM-25 ATM-51 ATM-155
 100VG-AnyLan TR-4 TR-16 Active
 TR-16 Passive