



Cable ID: PCU5-10CC-0200-BK-001

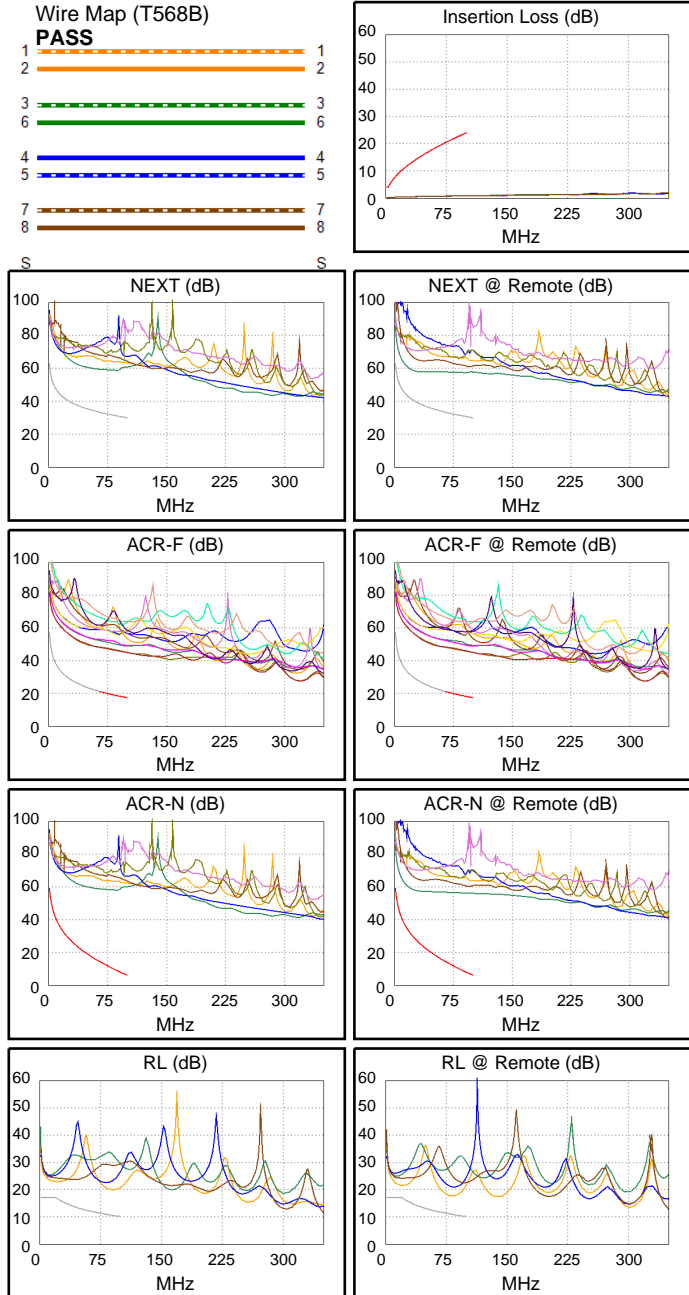
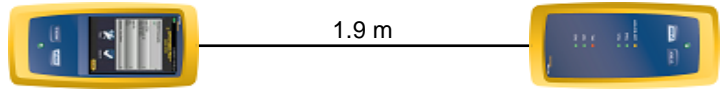
Test Limit: ISO11801 Channel Class D
Limits Version: V7.11
Date / Time: 2025/10/20 15:32:26
Operator: Impakt S.A - Serwis
Headroom 17.5 dB (NEXT 1,2-4,5)
Cable Type: Cat 5e U/UTP
NVP: 69.0%

Main: Versiv
S/N: 24410021
Software Version: V6.13 Build 2
Calibration Date: 2025/05/28
Adapter: DSX-602 (DSX-CHA004)
S/N: 25073277

Test Summary: PASS

Remote: Versiv
S/N: 24250049
Software Version: V6.13 Build 2
Calibration Date: 2025/05/28
Adapter: DSX-602R (DSX-CHA004)
S/N: 25073276

| | | |
|--------------------------------|------------|-------|
| Length (m), Limit 100.0 | [Pair 7,8] | 1.9 |
| Prop. Delay (ns), Limit 555 | [Pair 3,6] | 10 |
| Delay Skew (ns), Limit 50 | [Pair 1,2] | 1 |
| Resistance (ohms), Limit 25.00 | [Pair 1,2] | 1.61 |
| | | |
| Insertion Loss Margin (dB) | [Pair 1,2] | 23.2 |
| Frequency (MHz) | [Pair 1,2] | 100.0 |
| Limit (dB) | [Pair 1,2] | 24.0 |



| | Worst Case Margin | | Worst Case Value | |
|----------------------|-------------------|---------|------------------|---------|
| | MAIN | SR | MAIN | SR |
| N/A | | | | |
| Worst Pair | 1,2-4,5 | 1,2-4,5 | 1,2-4,5 | 1,2-4,5 |
| NEXT (dB) | 24.9 | 17.5 | 27.7 | 26.5 |
| Freq. (MHz) | 43.0 | 17.0 | 88.3 | 91.3 |
| Limit (dB) | 36.4 | 43.2 | 31.0 | 30.8 |
| Worst Pair | 1,2 | 4,5 | 1,2 | 4,5 |
| PS NEXT (dB) | 25.6 | 19.4 | 29.6 | 28.2 |
| Freq. (MHz) | 28.6 | 19.0 | 88.3 | 92.0 |
| Limit (dB) | 36.4 | 39.3 | 28.0 | 27.7 |
| PASS | | | | |
| Worst Pair | 3,6-4,5 | 3,6-4,5 | 4,5-3,6 | 3,6-4,5 |
| ACR-F (dB) | 26.1 | 26.1 | 26.8 | 26.9 |
| Freq. (MHz) | 47.0 | 5.0 | 100.0 | 100.0 |
| Limit (dB) | 24.0 | 43.4 | 17.4 | 17.4 |
| Worst Pair | 4,5 | 4,5 | 4,5 | 4,5 |
| PS ACR-F (dB) | 27.8 | 27.9 | 28.8 | 28.8 |
| Freq. (MHz) | 47.0 | 6.1 | 99.3 | 100.0 |
| Limit (dB) | 21.0 | 38.7 | 14.5 | 14.4 |
| PASS | | | | |
| Worst Pair | 3,6-7,8 | 1,2-4,5 | 1,2-4,5 | 1,2-4,5 |
| ACR-N (dB) | 29.9 | 23.2 | 49.4 | 48.7 |
| Freq. (MHz) | 1.3 | 3.0 | 88.3 | 91.3 |
| Limit (dB) | 57.7 | 51.6 | 8.6 | 7.9 |
| Worst Pair | 7,8 | 1,2 | 1,2 | 4,5 |
| PS ACR-N (dB) | 30.2 | 25.7 | 51.2 | 50.4 |
| Freq. (MHz) | 1.3 | 3.0 | 88.3 | 92.0 |
| Limit (dB) | 54.7 | 48.6 | 5.6 | 4.8 |
| N/A | | | | |
| Worst Pair | 1,2 | 1,2 | 1,2 | 1,2 |
| RL (dB) | 5.9 | 4.5 | 9.6 | 6.8 |
| Freq. (MHz) | 20.1 | 20.1 | 93.0 | 83.3 |
| Limit (dB) | 17.0 | 17.0 | 10.3 | 10.8 |

Compliant Network Standards:
 10BASE-T 100BASE-TX 100BASE-T4
 1000BASE-T 2.5GBASE-T ATM-25
 ATM-51 ATM-155 100VG-AnyLan
 TR-4 TR-16 Active TR-16 Passive