



Cable ID: PCU6-10CC-0500-BK-001

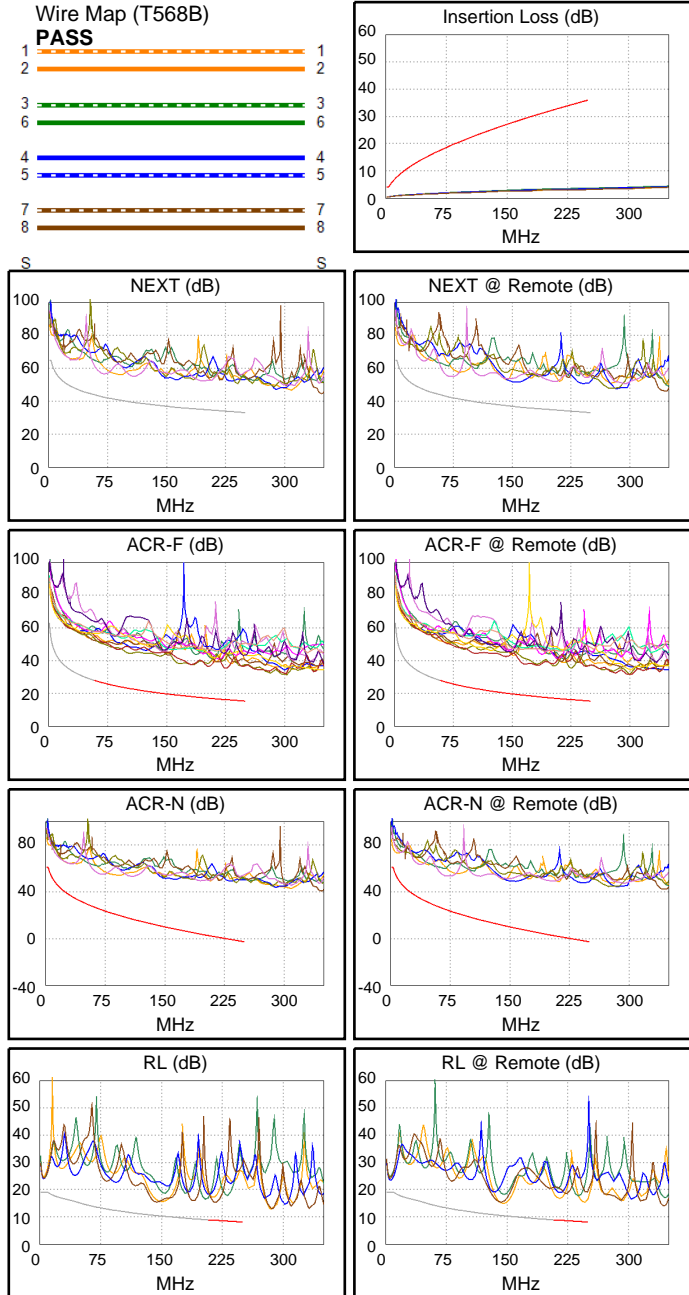
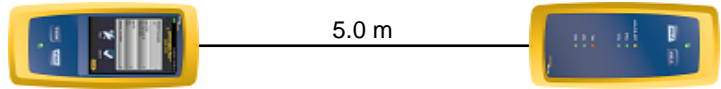
Test Limit: ISO11801 Channel Class E
Limits Version: V7.11
Date / Time: 2025/10/20 09:45:21
Operator: Impakt S.A - Serwis
Headroom 12.5 dB (NEXT 1,2-3,6)
Cable Type: Cat 6 U/UTP
NVP: 69.0%

Main: Versiv
S/N: 24410021
Software Version: V6.13 Build 2
Calibration Date: 2025/05/28
Adapter: DSX-602 (DSX-CHA004)
S/N: 25073277

Test Summary: PASS

Remote: Versiv
S/N: 24250049
Software Version: V6.13 Build 2
Calibration Date: 2025/05/28
Adapter: DSX-602R (DSX-CHA004)
S/N: 25073276

| | | |
|--------------------------------|------------|-------|
| Length (m), Limit 100.0 | [Pair 1,2] | 5.0 |
| Prop. Delay (ns), Limit 555 | [Pair 3,6] | 25 |
| Delay Skew (ns), Limit 50 | [Pair 3,6] | 1 |
| Resistance (ohms), Limit 25.00 | [Pair 3,6] | 3.40 |
| | | |
| Insertion Loss Margin (dB) | [Pair 3,6] | 32.3 |
| Frequency (MHz) | [Pair 3,6] | 250.0 |
| Limit (dB) | [Pair 3,6] | 35.9 |



| | Worst Case Margin | | Worst Case Value | |
|----------------------|-------------------|---------|------------------|---------|
| N/A | MAIN | SR | MAIN | SR |
| Worst Pair | 4,5-7,8 | 1,2-3,6 | 3,6-7,8 | 1,2-7,8 |
| NEXT (dB) | 14.0 | 12.5 | 17.2 | 17.4 |
| Freq. (MHz) | 69.0 | 3.9 | 239.5 | 241.5 |
| Limit (dB) | 42.7 | 63.3 | 33.4 | 33.4 |
| Worst Pair | 4,5 | 3,6 | 7,8 | 7,8 |
| PS NEXT (dB) | 15.9 | 13.5 | 17.9 | 18.1 |
| Freq. (MHz) | 69.0 | 3.9 | 240.0 | 242.0 |
| Limit (dB) | 39.9 | 60.8 | 30.5 | 30.4 |
| PASS | MAIN | SR | MAIN | SR |
| Worst Pair | 4,5-3,6 | 4,5-3,6 | 4,5-3,6 | 3,6-4,5 |
| ACR-F (dB) | 19.0 | 19.1 | 19.0 | 19.3 |
| Freq. (MHz) | 225.5 | 182.0 | 225.5 | 225.5 |
| Limit (dB) | 16.2 | 18.1 | 16.2 | 16.2 |
| Worst Pair | 3,6 | 4,5 | 3,6 | 3,6 |
| PS ACR-F (dB) | 20.9 | 21.6 | 21.0 | 22.3 |
| Freq. (MHz) | 226.5 | 224.0 | 227.0 | 243.0 |
| Limit (dB) | 13.2 | 13.3 | 13.1 | 12.5 |
| PASS | MAIN | SR | MAIN | SR |
| Worst Pair | 1,2-3,6 | 1,2-3,6 | 3,6-7,8 | 1,2-7,8 |
| ACR-N (dB) | 19.8 | 16.2 | 49.2 | 49.7 |
| Freq. (MHz) | 3.1 | 3.3 | 239.5 | 241.5 |
| Limit (dB) | 60.8 | 60.5 | -1.6 | -1.9 |
| Worst Pair | 3,6 | 3,6 | 3,6 | 7,8 |
| PS ACR-N (dB) | 20.9 | 17.3 | 49.8 | 50.4 |
| Freq. (MHz) | 3.4 | 3.9 | 241.0 | 242.0 |
| Limit (dB) | 57.7 | 56.6 | -4.8 | -4.9 |
| PASS | MAIN | SR | MAIN | SR |
| Worst Pair | 7,8 | 1,2 | 7,8 | 1,2 |
| RL (dB) | 6.5 | 7.1 | 6.6 | 7.1 |
| Freq. (MHz) | 216.0 | 246.0 | 217.0 | 246.0 |
| Limit (dB) | 8.7 | 8.1 | 8.6 | 8.1 |

Compliant Network Standards:
 10BASE-T 100BASE-TX 100BASE-T4
 1000BASE-T 2.5GBASE-T 5GBASE-T
 ATM-25 ATM-51 ATM-155
 100VG-AnyLan TR-4 TR-16 Active
 TR-16 Passive