



**Cable ID: PCU6-10CU-0200-S-001**

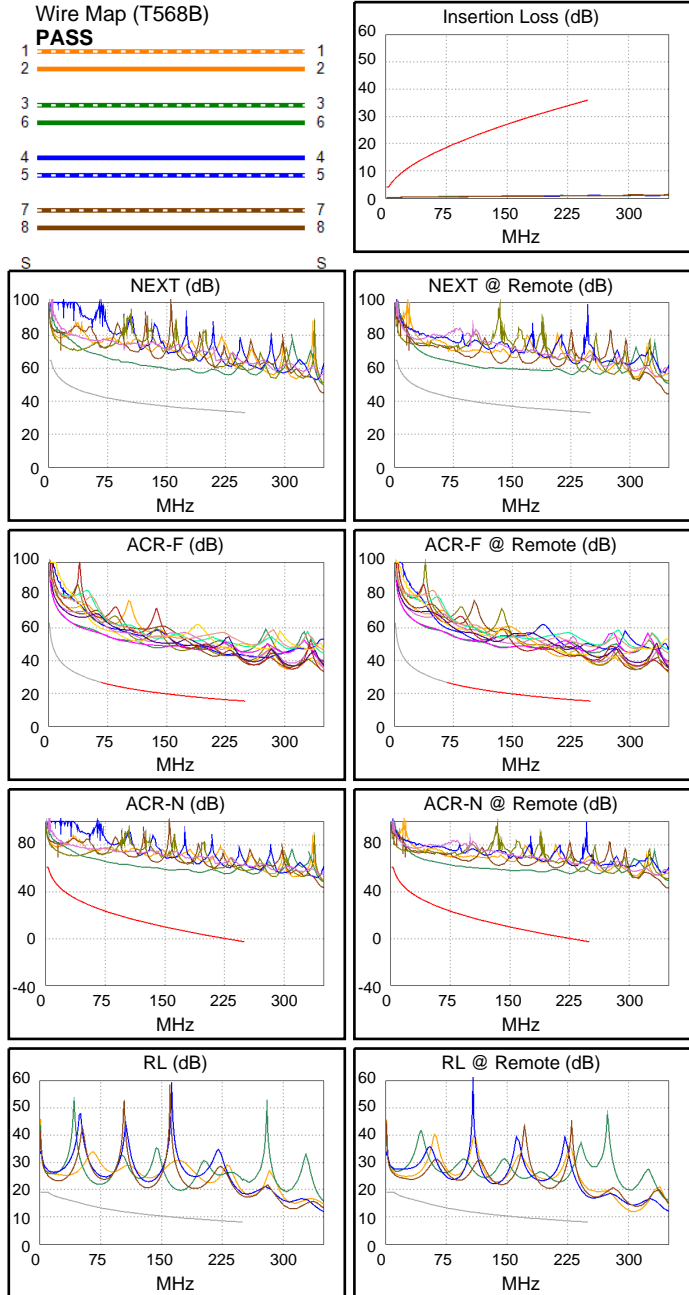
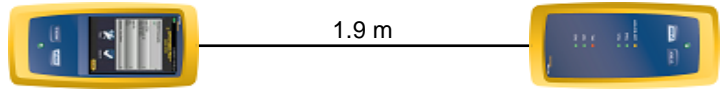
**Test Limit: ISO11801 Channel Class E**  
Limits Version: V7.11  
Date / Time: 2025/10/20 15:28:28  
Operator: Impakt S.A - Serwis  
**Headroom 19.6 dB (NEXT 3,6-7,8)**  
Cable Type: Cat 6 U/UTP  
NVP: 69.0%

Main: Versiv  
S/N: 24410021  
Software Version: V6.13 Build 2  
Calibration Date: 2025/05/28  
Adapter: DSX-602 (DSX-CHA004)  
S/N: 25073277

**Test Summary: PASS**

Remote: Versiv  
S/N: 24250049  
Software Version: V6.13 Build 2  
Calibration Date: 2025/05/28  
Adapter: DSX-602R (DSX-CHA004)  
S/N: 25073276

Length (m), Limit 100.0	[Pair 1,2]	1.9
Prop. Delay (ns), Limit 555	[Pair 3,6]	10
Delay Skew (ns), Limit 50	[Pair 3,6]	1
Resistance (ohms), Limit 25.00	[Pair 4,5]	0.54
Insertion Loss Margin (dB)	[Pair 3,6]	32.6
Frequency (MHz)	[Pair 3,6]	220.5
Limit (dB)	[Pair 3,6]	33.5



	Worst Case Margin		Worst Case Value	
	MAIN	SR	MAIN	SR
<b>N/A</b>				
Worst Pair	3,6-7,8	3,6-7,8	1,2-4,5	1,2-4,5
<b>NEXT (dB)</b>	19.6	19.6	22.2	22.6
Freq. (MHz)	4.1	3.3	228.5	228.0
Limit (dB)	62.8	64.5	33.8	33.8
Worst Pair	3,6	3,6	1,2	1,2
<b>PS NEXT (dB)</b>	18.4	20.2	24.1	24.3
Freq. (MHz)	4.1	3.0	231.5	229.0
Limit (dB)	60.3	62.0	30.7	30.8
<b>PASS</b>				
Worst Pair	3,6-1,2	1,2-3,6	3,6-1,2	1,2-3,6
<b>ACR-F (dB)</b>	23.3	23.4	23.3	23.4
Freq. (MHz)	250.0	250.0	250.0	250.0
Limit (dB)	15.3	15.3	15.3	15.3
Worst Pair	3,6	3,6	3,6	3,6
<b>PS ACR-F (dB)</b>	23.0	23.5	23.0	23.5
Freq. (MHz)	250.0	250.0	250.0	250.0
Limit (dB)	12.3	12.3	12.3	12.3
<b>PASS</b>				
Worst Pair	1,2-3,6	3,6-7,8	1,2-4,5	1,2-4,5
<b>ACR-N (dB)</b>	23.7	23.5	55.8	56.1
Freq. (MHz)	3.5	3.3	228.5	228.0
Limit (dB)	60.0	60.5	-0.4	-0.3
Worst Pair	3,6	3,6	1,2	1,2
<b>PS ACR-N (dB)</b>	22.5	24.1	57.9	57.9
Freq. (MHz)	4.1	3.0	231.5	229.0
Limit (dB)	56.1	58.0	-3.7	-3.4
<b>N/A</b>				
Worst Pair	7,8	7,8	7,8	4,5
<b>RL (dB)</b>	5.7	6.5	9.7	9.3
Freq. (MHz)	18.5	16.1	250.0	250.0
Limit (dB)	17.7	18.0	8.0	8.0

Compliant Network Standards:  
 10BASE-T      100BASE-TX      100BASE-T4  
 1000BASE-T    2.5GBASE-T      5GBASE-T  
 ATM-25        ATM-51            ATM-155  
 100VG-AnyLan    TR-4              TR-16 Active  
 TR-16 Passive