



Cable ID: PCU6-10CU-0300-BK-001

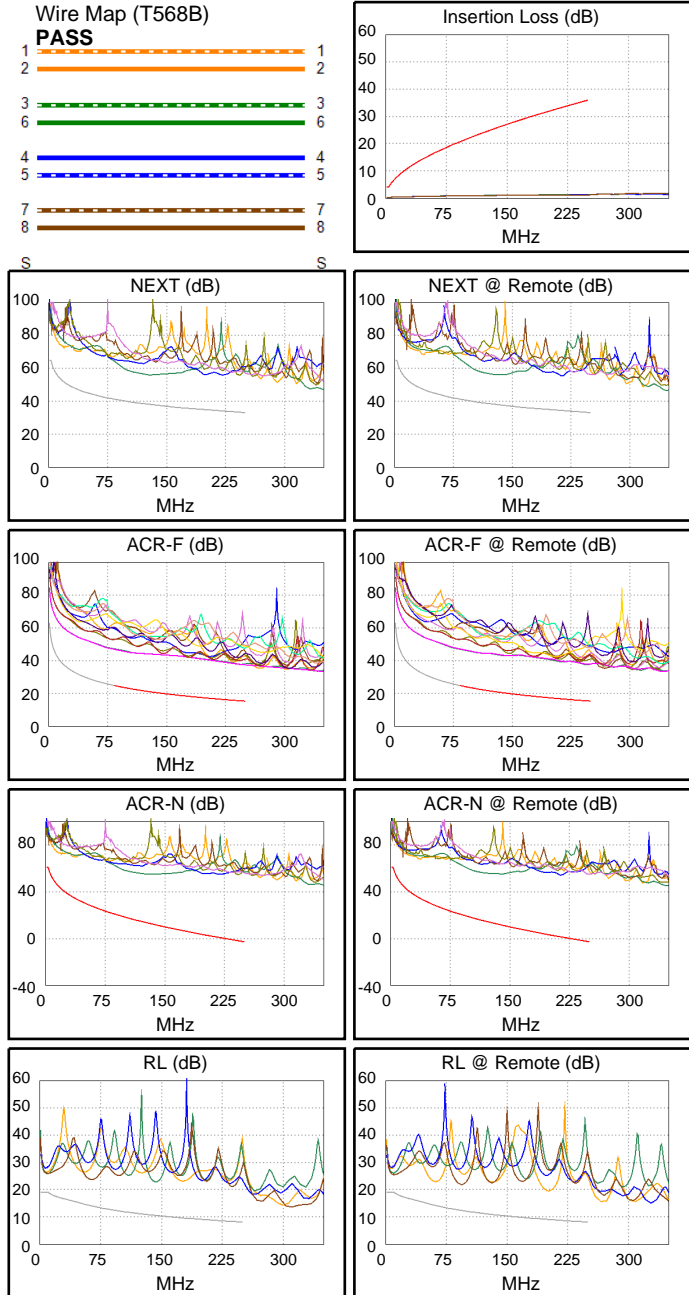
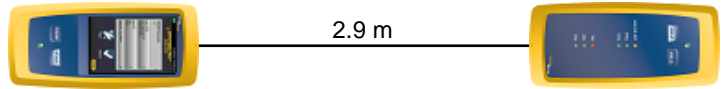
Test Limit: ISO11801 Channel Class E
Limits Version: V7.11
Date / Time: 2025/10/20 13:37:25
Operator: Impakt S.A - Serwis
Headroom 17.6 dB (NEXT 1,2-4,5)
Cable Type: Cat 6 U/UTP
NVP: 69.0%

Main: Versiv
S/N: 24410021
Software Version: V6.13 Build 2
Calibration Date: 2025/05/28
Adapter: DSX-602 (DSX-CHA004)
S/N: 25073277

Test Summary: PASS

Remote: Versiv
S/N: 24250049
Software Version: V6.13 Build 2
Calibration Date: 2025/05/28
Adapter: DSX-602R (DSX-CHA004)
S/N: 25073276

| | | |
|--------------------------------|------------|-------|
| Length (m), Limit 100.0 | [Pair 7,8] | 2.9 |
| Prop. Delay (ns), Limit 555 | [Pair 3,6] | 15 |
| Delay Skew (ns), Limit 50 | [Pair 1,2] | 1 |
| Resistance (ohms), Limit 25.00 | [Pair 3,6] | 0.82 |
| | | |
| Insertion Loss Margin (dB) | [Pair 1,2] | 33.9 |
| Frequency (MHz) | [Pair 1,2] | 241.0 |
| Limit (dB) | [Pair 1,2] | 35.2 |



Worst Case Margin Worst Case Value

| N/A | MAIN | SR | MAIN | SR |
|---------------------|---------|---------|---------|---------|
| Worst Pair | 1,2-4,5 | 1,2-4,5 | 3,6-7,8 | 1,2-7,8 |
| NEXT (dB) | 17.6 | 18.2 | 22.3 | 21.0 |
| Freq. (MHz) | 123.5 | 127.5 | 242.0 | 214.5 |
| Limit (dB) | 38.4 | 38.1 | 33.4 | 34.3 |
| Worst Pair | 3,6 | 1,2 | 7,8 | 7,8 |
| PS NEXT (dB) | 19.5 | 20.0 | 22.3 | 21.8 |
| Freq. (MHz) | 3.9 | 19.0 | 241.0 | 213.0 |
| Limit (dB) | 60.8 | 49.3 | 30.4 | 31.4 |

| PASS | MAIN | SR | MAIN | SR |
|----------------------|---------|---------|---------|---------|
| Worst Pair | 4,5-1,2 | 1,2-4,5 | 4,5-1,2 | 1,2-4,5 |
| ACR-F (dB) | 21.8 | 21.8 | 22.1 | 22.1 |
| Freq. (MHz) | 75.0 | 75.0 | 246.5 | 246.5 |
| Limit (dB) | 25.8 | 25.8 | 15.4 | 15.4 |
| Worst Pair | 3,6 | 1,2 | 3,6 | 4,5 |
| PS ACR-F (dB) | 23.0 | 22.8 | 23.1 | 22.9 |
| Freq. (MHz) | 237.0 | 238.5 | 240.0 | 245.0 |
| Limit (dB) | 12.8 | 12.7 | 12.7 | 12.5 |

| PASS | MAIN | SR | MAIN | SR |
|----------------------|---------|---------|---------|---------|
| Worst Pair | 3,6-4,5 | 3,6-4,5 | 3,6-7,8 | 1,2-7,8 |
| ACR-N (dB) | 24.3 | 26.5 | 56.4 | 52.9 |
| Freq. (MHz) | 3.9 | 2.8 | 242.0 | 214.5 |
| Limit (dB) | 59.1 | 61.0 | -1.9 | 1.3 |
| Worst Pair | 3,6 | 1,2 | 7,8 | 7,8 |
| PS ACR-N (dB) | 23.5 | 27.0 | 56.3 | 53.6 |
| Freq. (MHz) | 3.9 | 4.8 | 241.0 | 213.0 |
| Limit (dB) | 56.6 | 54.8 | -4.8 | -1.5 |

| N/A | MAIN | SR | MAIN | SR |
|----------------|------|------|-------|-------|
| Worst Pair | 3,6 | 7,8 | 7,8 | 1,2 |
| RL (dB) | 6.8 | 6.3 | 12.9 | 10.6 |
| Freq. (MHz) | 9.9 | 9.8 | 238.0 | 202.5 |
| Limit (dB) | 19.0 | 19.0 | 8.2 | 8.9 |

Compliant Network Standards:
 10BASE-T 100BASE-TX 100BASE-T4
 1000BASE-T 2.5GBASE-T 5GBASE-T
 ATM-25 ATM-51 ATM-155
 100VG-AnyLan TR-4 TR-16 Active
 TR-16 Passive