



### Cable ID: PCF7-10CU-0200-S-001

Test Limit: ISO11801 Channel Class Ea

Limits Version: V7.11

Date / Time: 2025/10/20 14:37:45

Operator: Impakt S.A - Serwis

Headroom 16.3 dB (NEXT 3,6-4,5)

Cable Type: Cat 6A S/FTP

NVP: 77.0%

Main: Versiv

S/N: 24410021

Software Version: V6.13 Build 2

Calibration Date: 2025/05/28

Adapter: DSX-602 (DSX-CHA004)

S/N: 25073277

### Test Summary: PASS

Remote: Versiv

S/N: 24250049

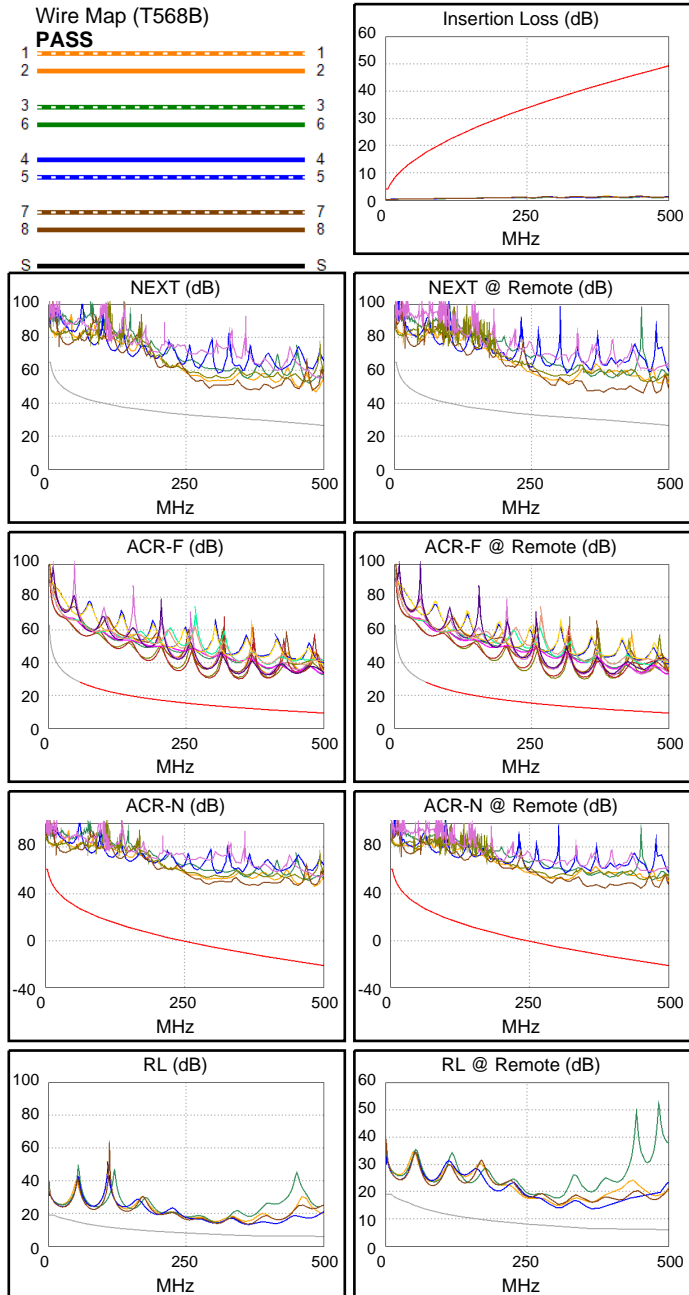
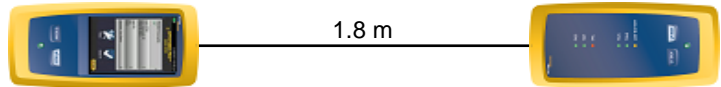
Software Version: V6.13 Build 2

Calibration Date: 2025/05/28

Adapter: DSX-602R (DSX-CHA004)

S/N: 25073276

Length (m), Limit 100.0	[Pair 4,5]	1.8
Prop. Delay (ns), Limit 555	[Pair 1,2]	9
Delay Skew (ns), Limit 50	[Pair 1,2]	1
Resistance (ohms), Limit 25.00	[Pair 4,5]	0.50
Insertion Loss Margin (dB)	[Pair 1,2]	42.1
Frequency (MHz)	[Pair 1,2]	397.0
Limit (dB)	[Pair 1,2]	43.5



Worst Case Margin Worst Case Value

N/A	MAIN	SR	MAIN	SR
Worst Pair	3,6-4,5	3,6-4,5	1,2-3,6	3,6-4,5
<b>NEXT (dB)</b>	17.3	16.3	19.8	18.0
Freq. (MHz)	365.0	386.0	485.0	479.0
Limit (dB)	30.3	29.8	27.1	27.4
Worst Pair	3,6	3,6	3,6	3,6
<b>PS NEXT (dB)</b>	18.1	18.7	20.1	19.7
Freq. (MHz)	291.0	384.0	483.0	479.0
Limit (dB)	29.0	26.9	24.2	24.4

PASS	MAIN	SR	MAIN	SR
Worst Pair	4,5-3,6	3,6-4,5	4,5-3,6	3,6-4,5
<b>ACR-F (dB)</b>	16.7	16.4	17.6	17.4
Freq. (MHz)	291.0	291.0	348.0	347.0
Limit (dB)	14.0	14.0	12.4	12.5
Worst Pair	3,6	3,6	3,6	3,6
<b>PS ACR-F (dB)</b>	17.9	18.4	19.0	19.3
Freq. (MHz)	347.0	288.0	401.0	401.0
Limit (dB)	9.5	11.1	8.2	8.2

PASS	MAIN	SR	MAIN	SR
Worst Pair	3,6-7,8	3,6-7,8	1,2-3,6	3,6-4,5
<b>ACR-N (dB)</b>	23.6	22.5	66.6	64.5
Freq. (MHz)	2.6	3.0	485.0	479.0
Limit (dB)	61.0	61.0	-20.4	-20.0
Worst Pair	3,6	3,6	3,6	3,6
<b>PS ACR-N (dB)</b>	24.1	23.1	66.9	66.4
Freq. (MHz)	2.8	3.9	483.0	479.0
Limit (dB)	58.0	56.7	-23.3	-23.0

N/A	MAIN	SR	MAIN	SR
Worst Pair	7,8	4,5	4,5	4,5
<b>RL (dB)</b>	6.6	6.7	6.8	7.3
Freq. (MHz)	305.0	309.0	366.0	372.0
Limit (dB)	7.2	7.1	6.4	6.3

Compliant Network Standards:  
 10BASE-T 100BASE-TX 100BASE-T4  
 1000BASE-T 2.5GBASE-T 5GBASE-T  
 10GBASE-T ATM-25 ATM-51  
 ATM-155 100VG-AnyLan TR-4  
 TR-16 Active TR-16 Passive