



**Cable ID: PCF6-10CU-0025-R-001**

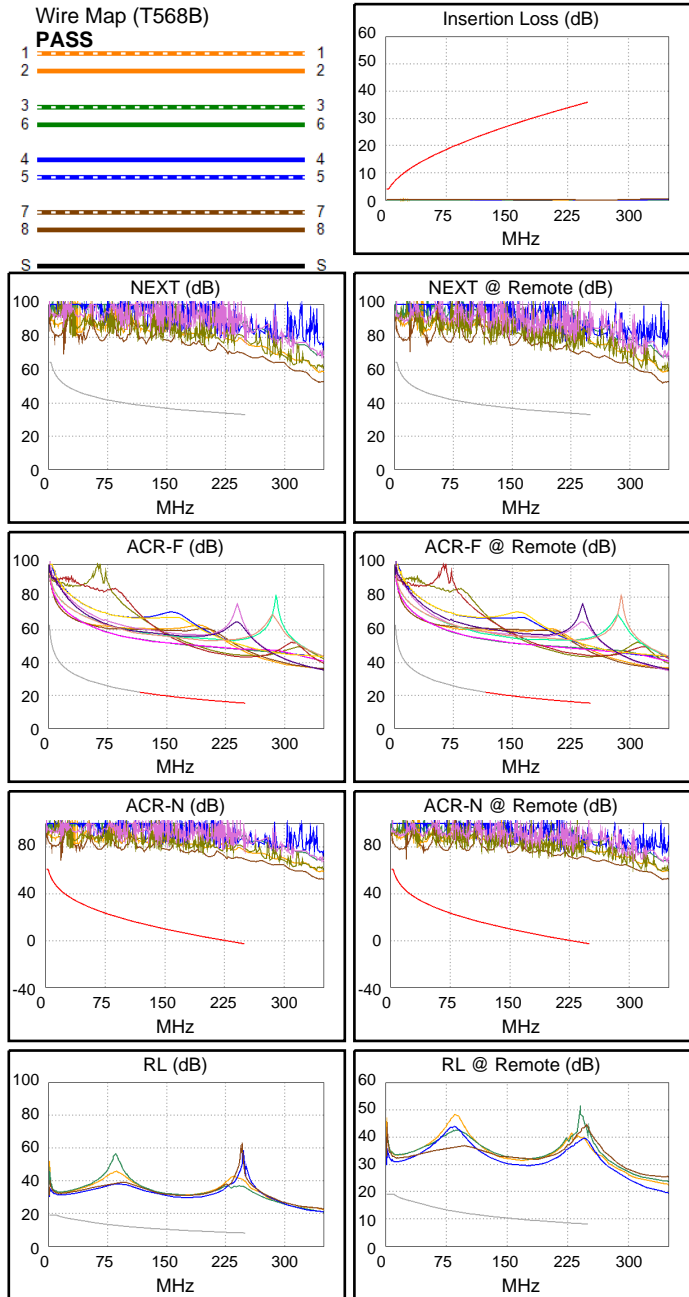
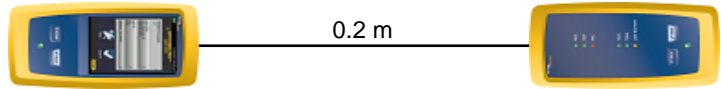
**Test Limit: ISO11801 Channel Class E**  
Limits Version: V7.11  
Date / Time: 2025/10/20 11:06:59  
Operator: Impakt S.A - Serwis  
**Headroom 19.6 dB (NEXT 3,6-4,5)**  
Cable Type: Cat 6 F/UTP  
NVP: 70.0%

Main: Versiv  
S/N: 24410021  
Software Version: V6.13 Build 2  
Calibration Date: 2025/05/28  
Adapter: DSX-602 (DSX-CHA004)  
S/N: 25073277

**Test Summary: PASS**

Remote: Versiv  
S/N: 24250049  
Software Version: V6.13 Build 2  
Calibration Date: 2025/05/28  
Adapter: DSX-602R (DSX-CHA004)  
S/N: 25073276

|                                |            |       |
|--------------------------------|------------|-------|
| Length (m), Limit 100.0        | [Pair 1,2] | 0.2   |
| Prop. Delay (ns), Limit 555    | [Pair 1,2] | 1     |
| Delay Skew (ns), Limit 50      | [Pair 1,2] | 0     |
| Resistance (ohms), Limit 25.00 | [Pair 4,5] | 1.43  |
|                                |            |       |
| Insertion Loss Margin (dB)     | [Pair 3,6] | 31.6  |
| Frequency (MHz)                | [Pair 3,6] | 201.0 |
| Limit (dB)                     | [Pair 3,6] | 31.8  |



Worst Case Margin Worst Case Value

| N/A                 | MAIN    | SR      | MAIN    | SR      |
|---------------------|---------|---------|---------|---------|
| Worst Pair          | 3,6-4,5 | 3,6-4,5 | 3,6-4,5 | 3,6-4,5 |
| <b>NEXT (dB)</b>    | 20.2    | 19.6    | 35.4    | 36.2    |
| Freq. (MHz)         | 3.9     | 4.0     | 233.5   | 249.5   |
| Limit (dB)          | 63.3    | 63.0    | 33.6    | 33.1    |
| Worst Pair          | 3,6     | 3,6     | 3,6     | 3,6     |
| <b>PS NEXT (dB)</b> | 21.7    | 21.0    | 37.5    | 37.9    |
| Freq. (MHz)         | 3.9     | 3.4     | 236.0   | 249.5   |
| Limit (dB)          | 60.8    | 61.7    | 30.6    | 30.2    |

| PASS                 | MAIN    | SR      | MAIN    | SR      |
|----------------------|---------|---------|---------|---------|
| Worst Pair           | 4,5-3,6 | 3,6-4,5 | 4,5-3,6 | 3,6-4,5 |
| <b>ACR-F (dB)</b>    | 28.1    | 28.1    | 28.3    | 28.3    |
| Freq. (MHz)          | 245.5   | 245.5   | 250.0   | 250.0   |
| Limit (dB)           | 15.5    | 15.5    | 15.3    | 15.3    |
| Worst Pair           | 3,6     | 4,5     | 3,6     | 4,5     |
| <b>PS ACR-F (dB)</b> | 29.5    | 29.4    | 29.5    | 29.8    |
| Freq. (MHz)          | 250.0   | 229.0   | 250.0   | 250.0   |
| Limit (dB)           | 12.3    | 13.1    | 12.3    | 12.3    |

| PASS                 | MAIN    | SR      | MAIN    | SR      |
|----------------------|---------|---------|---------|---------|
| Worst Pair           | 3,6-4,5 | 3,6-4,5 | 3,6-4,5 | 3,6-4,5 |
| <b>ACR-N (dB)</b>    | 24.3    | 23.6    | 70.0    | 72.1    |
| Freq. (MHz)          | 3.9     | 4.0     | 233.5   | 249.5   |
| Limit (dB)           | 59.1    | 58.9    | -1.0    | -2.8    |
| Worst Pair           | 3,6     | 3,6     | 3,6     | 3,6     |
| <b>PS ACR-N (dB)</b> | 25.7    | 25.0    | 72.3    | 73.8    |
| Freq. (MHz)          | 2.9     | 3.4     | 236.0   | 249.5   |
| Limit (dB)           | 58.0    | 57.7    | -4.2    | -5.7    |

| N/A            | MAIN | SR   | MAIN  | SR    |
|----------------|------|------|-------|-------|
| Worst Pair     | 4,5  | 4,5  | 4,5   | 4,5   |
| <b>RL (dB)</b> | 11.0 | 10.6 | 20.2  | 20.0  |
| Freq. (MHz)    | 1.0  | 1.0  | 182.0 | 179.0 |
| Limit (dB)     | 19.0 | 19.0 | 9.4   | 9.5   |

Compliant Network Standards:  
 10BASE-T 100BASE-TX 100BASE-T4  
 1000BASE-T 2.5GBASE-T 5GBASE-T  
 ATM-25 ATM-51 ATM-155  
 100VG-AnyLan TR-4 TR-16 Active  
 TR-16 Passive