



**Cable ID/ Test ID: PCU5-20CC-0050-S-001**

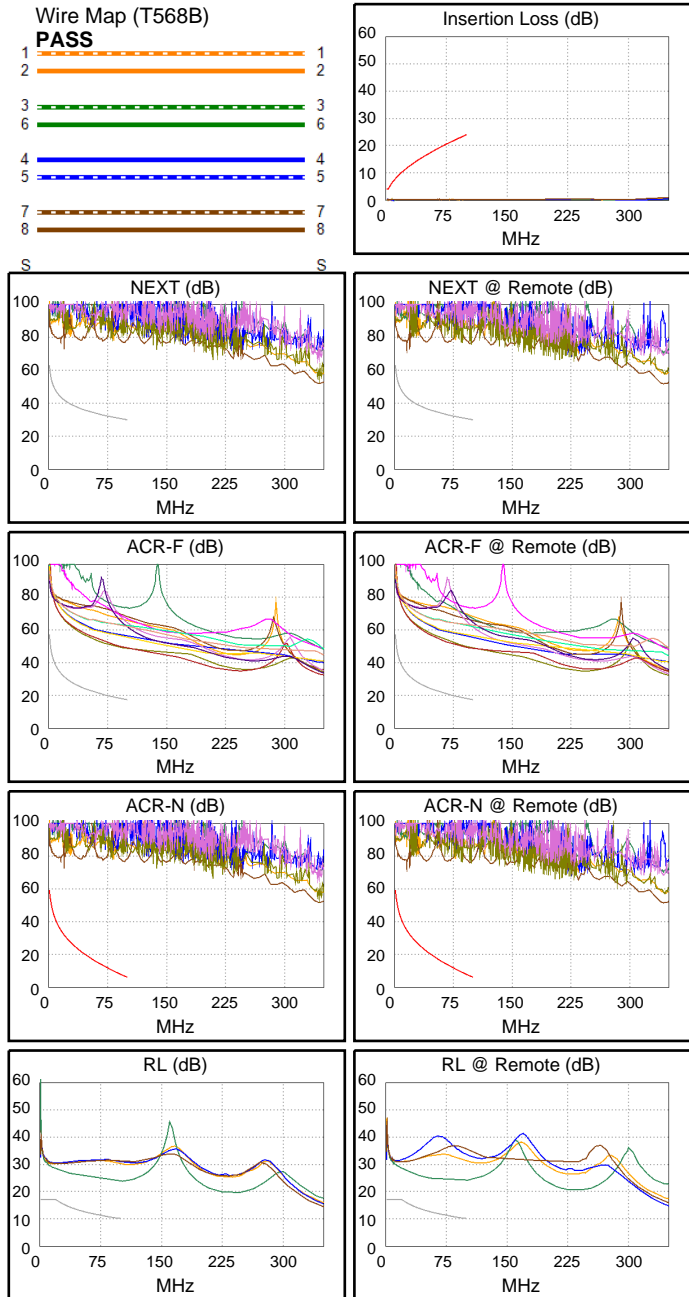
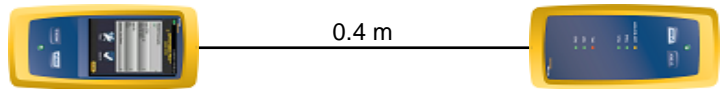
**Test Limit: ISO11801 Channel Class D**  
Limits Version: V7.11  
Date / Time: 2026/01/26 17:52:23  
Operator: Lanberg  
**Headroom 25.5 dB (NEXT 3,6-4,5)**  
Cable Type: Cat 5e U/UTP  
NVP: 69.0%

Main: Versiv  
S/N: 24410021  
Software Version: V6.14 Build 9  
Calibration Date: 2025/05/28  
Adapter: DSX-602 (DSX-CHA004)  
S/N: 25073277

**Test Summary: PASS**

Remote: Versiv  
S/N: 24250049  
Software Version: V6.14 Build 9  
Calibration Date: 2025/05/28  
Adapter: DSX-602R (DSX-CHA004)  
S/N: 25073276

Length (m), Limit 100.0	[Pair 1,2]	0.4
Prop. Delay (ns), Limit 555	[Pair 1,2]	2
Delay Skew (ns), Limit 50	[Pair 1,2]	0
Resistance (ohms), Limit 25.00	[Pair 1,2]	0.39
Insertion Loss Margin (dB)	[Pair 1,2]	23.7
Frequency (MHz)	[Pair 1,2]	98.8
Limit (dB)	[Pair 1,2]	23.9



Worst Case Margin Worst Case Value

N/A	MAIN	SR	MAIN	SR
Worst Pair	3,6-4,5	3,6-4,5	3,6-4,5	3,6-4,5
<b>NEXT (dB)</b>	25.7	25.5	34.2	31.6
Freq. (MHz)	1.4	1.3	20.0	19.0
Limit (dB)	61.1	61.7	42.0	42.3
Worst Pair	3,6	3,6	3,6	3,6
<b>PS NEXT (dB)</b>	27.5	27.2	48.3	34.3
Freq. (MHz)	1.4	1.3	95.8	19.0
Limit (dB)	58.1	58.7	27.4	39.3

PASS	MAIN	SR	MAIN	SR
Worst Pair	3,6-4,5	4,5-3,6	3,6-4,5	4,5-3,6
<b>ACR-F (dB)</b>	31.2	31.2	31.3	31.3
Freq. (MHz)	99.3	99.3	100.0	100.0
Limit (dB)	17.5	17.5	17.4	17.4
Worst Pair	4,5	3,6	4,5	3,6
<b>PS ACR-F (dB)</b>	34.0	34.1	34.1	34.2
Freq. (MHz)	99.3	99.3	100.0	100.0
Limit (dB)	14.5	14.5	14.4	14.4

PASS	MAIN	SR	MAIN	SR
Worst Pair	3,6-4,5	3,6-4,5	3,6-4,5	3,6-4,5
<b>ACR-N (dB)</b>	29.7	29.4	44.3	41.4
Freq. (MHz)	1.4	1.3	20.0	19.0
Limit (dB)	57.1	57.7	31.8	32.4
Worst Pair	3,6	3,6	3,6	3,6
<b>PS ACR-N (dB)</b>	31.5	31.2	71.6	44.1
Freq. (MHz)	1.4	1.3	95.8	19.0
Limit (dB)	54.1	54.7	4.0	29.4

N/A	MAIN	SR	MAIN	SR
Worst Pair	3,6	3,6	3,6	3,6
<b>RL (dB)</b>	11.5	11.5	13.4	13.3
Freq. (MHz)	20.6	20.0	96.3	87.3
Limit (dB)	16.9	17.0	10.2	10.6

Compliant Network Standards:  
 10BASE-T 100BASE-TX 100BASE-T4  
 1000BASE-T 2.5GBASE-T ATM-25  
 ATM-51 ATM-155 100VG-AnyLan  
 TR-4 TR-16 Active TR-16 Passive