



**Cable ID/ Test ID: PCU6-10CC-0500-BK-001**

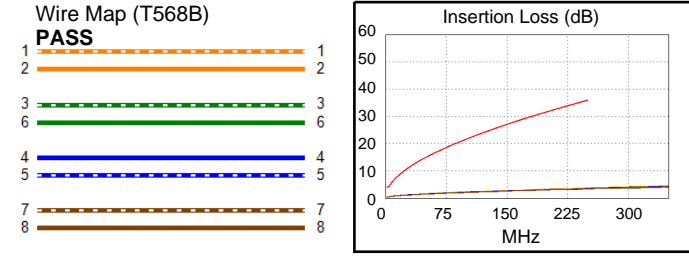
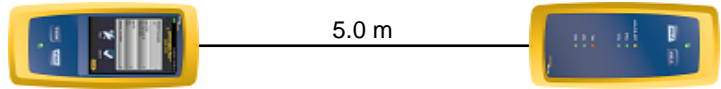
**Test Limit: ISO11801 Channel Class E**  
Limits Version: V7.11  
Date / Time: 2026/01/26 16:43:37  
Operator: Lanberg  
**Headroom 9.8 dB (NEXT 1,2-4,5)**  
Cable Type: Cat 6 U/UTP  
NVP: 69.0%

Main: Versiv  
S/N: 24410021  
Software Version: V6.14 Build 9  
Calibration Date: 2025/05/28  
Adapter: DSX-602 (DSX-CHA004)  
S/N: 25073277

**Test Summary: PASS**

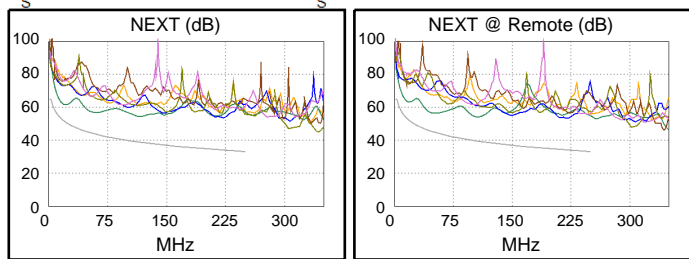
Remote: Versiv  
S/N: 24250049  
Software Version: V6.14 Build 9  
Calibration Date: 2025/05/28  
Adapter: DSX-602R (DSX-CHA004)  
S/N: 25073276

Length (m), Limit 100.0	[Pair 1,2]	5.0
Prop. Delay (ns), Limit 555	[Pair 3,6]	25
Delay Skew (ns), Limit 50	[Pair 3,6]	1
Resistance (ohms), Limit 25.00	[Pair 3,6]	3.36
Insertion Loss Margin (dB)	[Pair 1,2]	32.2
Frequency (MHz)	[Pair 1,2]	250.0
Limit (dB)	[Pair 1,2]	35.9

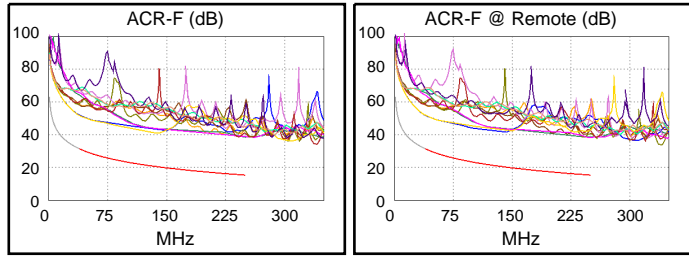


Worst Case Margin Worst Case Value

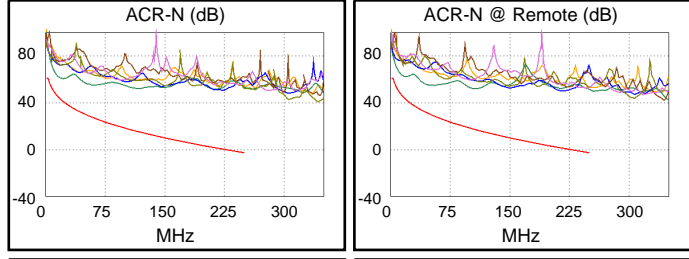
N/A	MAIN	SR	MAIN	SR
Worst Pair	1,2-4,5	1,2-4,5	1,2-7,8	1,2-7,8
<b>NEXT (dB)</b>	9.8	10.3	19.7	19.2
Freq. (MHz)	15.5	14.3	222.5	220.5
Limit (dB)	53.5	54.1	34.0	34.1
Worst Pair	1,2	1,2	1,2	1,2
<b>PS NEXT (dB)</b>	12.0	12.5	19.2	19.4
Freq. (MHz)	16.0	14.4	216.0	217.5
Limit (dB)	50.6	51.4	31.3	31.2



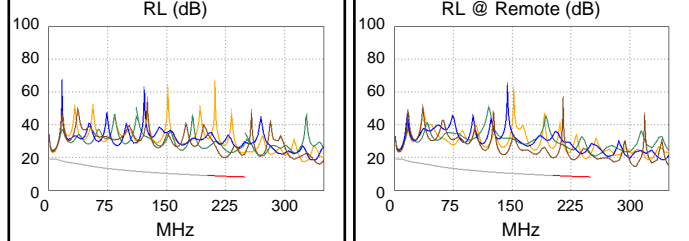
PASS	MAIN	SR	MAIN	SR
Worst Pair	7,8-1,2	1,2-7,8	4,5-1,2	4,5-1,2
<b>ACR-F (dB)</b>	20.3	20.3	22.7	22.8
Freq. (MHz)	54.3	40.8	249.5	250.0
Limit (dB)	28.6	31.1	15.3	15.3
Worst Pair	1,2	1,2	3,6	1,2
<b>PS ACR-F (dB)</b>	21.4	21.7	23.2	22.8
Freq. (MHz)	136.5	139.5	242.5	245.5
Limit (dB)	17.6	17.4	12.6	12.5



PASS	MAIN	SR	MAIN	SR
Worst Pair	1,2-4,5	1,2-4,5	1,2-7,8	1,2-7,8
<b>ACR-N (dB)</b>	17.2	16.8	50.2	49.6
Freq. (MHz)	15.5	10.8	222.5	220.5
Limit (dB)	45.3	49.3	0.3	0.6
Worst Pair	1,2	1,2	1,2	1,2
<b>PS ACR-N (dB)</b>	19.3	18.7	49.0	49.3
Freq. (MHz)	14.5	8.6	216.0	217.5
Limit (dB)	43.4	49.0	-1.8	-2.0



PASS	MAIN	SR	MAIN	SR
Worst Pair	7,8	7,8	7,8	7,8
<b>RL (dB)</b>	11.2	10.2	11.2	10.2
Freq. (MHz)	223.5	229.5	223.5	229.5
Limit (dB)	8.5	8.4	8.5	8.4



Compliant Network Standards:  
 10BASE-T 100BASE-TX 100BASE-T4  
 1000BASE-T 2.5GBASE-T 5GBASE-T  
 ATM-25 ATM-51 ATM-155  
 100VG-AnyLan TR-4 TR-16 Active  
 TR-16 Passive