



**Cable ID/ Test ID: PCU6-10CC-0025-W-001**

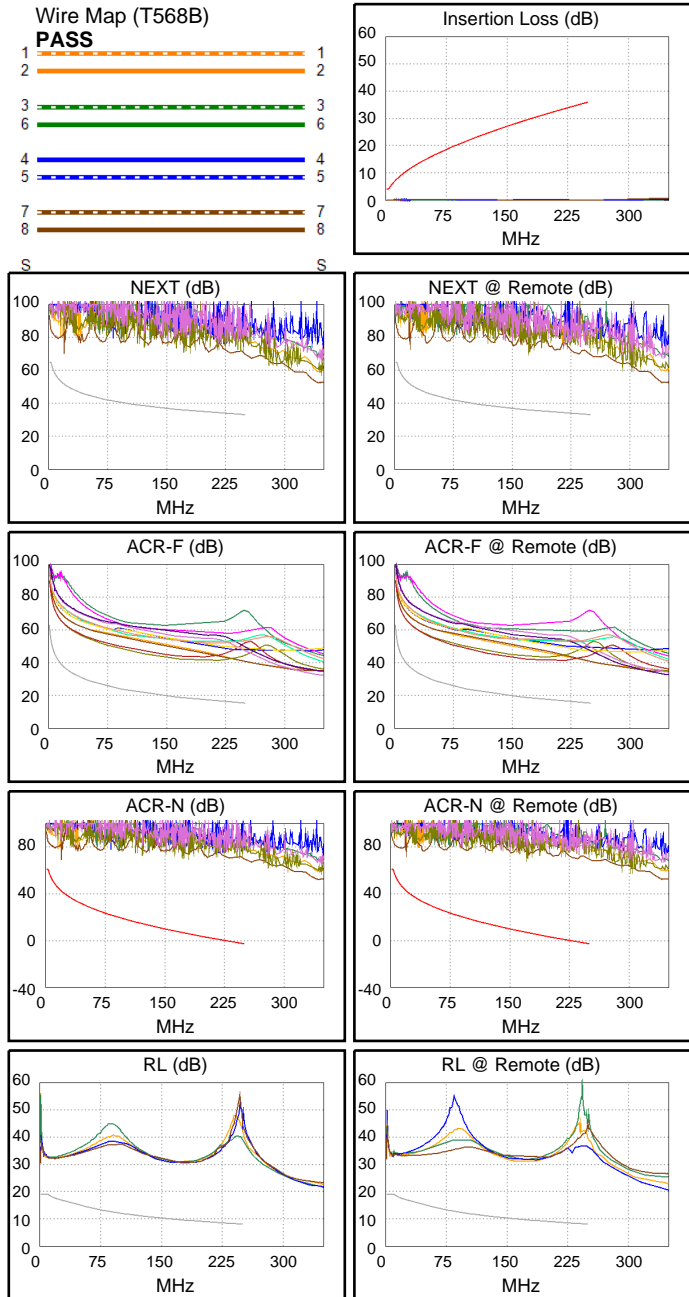
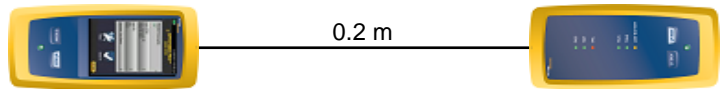
**Test Limit: ISO11801 Channel Class E**  
Limits Version: V7.11  
Date / Time: 2026/01/27 07:15:45  
Operator: Lanberg  
**Headroom 20.0 dB (NEXT 3,6-4,5)**  
Cable Type: Cat 6 U/UTP  
NVP: 69.0%

Main: Versiv  
S/N: 24410021  
Software Version: V6.14 Build 9  
Calibration Date: 2025/05/28  
Adapter: DSX-602 (DSX-CHA004)  
S/N: 25073276

**Test Summary: PASS**

Remote: Versiv  
S/N: 24250049  
Software Version: V6.14 Build 9  
Calibration Date: 2025/05/28  
Adapter: DSX-602R (DSX-CHA004)  
S/N: 25073277

Length (m), Limit 100.0	[Pair 1,2]	0.2
Prop. Delay (ns), Limit 555	[Pair 1,2]	1
Delay Skew (ns), Limit 50	[Pair 1,2]	0
Resistance (ohms), Limit 25.00	[Pair 7,8]	0.18
Insertion Loss Margin (dB)	[Pair 1,2]	21.0
Frequency (MHz)	[Pair 1,2]	94.8
Limit (dB)	[Pair 1,2]	21.1



Worst Case Margin Worst Case Value

N/A	MAIN	SR	MAIN	SR
Worst Pair	3,6-4,5	3,6-4,5	3,6-4,5	3,6-4,5
<b>NEXT (dB)</b>	20.0	20.0	36.8	35.7
Freq. (MHz)	2.8	7.8	249.5	233.5
Limit (dB)	65.0	58.4	33.1	33.6
Worst Pair	3,6	3,6	3,6	3,6
<b>PS NEXT (dB)</b>	22.3	22.0	38.1	38.0
Freq. (MHz)	3.9	7.8	233.0	249.5
Limit (dB)	60.8	55.8	30.7	30.2

PASS	MAIN	SR	MAIN	SR
Worst Pair	3,6-4,5	4,5-3,6	1,2-3,6	3,6-1,2
<b>ACR-F (dB)</b>	23.4	23.4	25.6	25.6
Freq. (MHz)	175.5	175.5	250.0	250.0
Limit (dB)	18.4	18.4	15.3	15.3
Worst Pair	4,5	3,6	3,6	3,6
<b>PS ACR-F (dB)</b>	26.1	25.3	27.8	26.5
Freq. (MHz)	175.5	182.0	250.0	250.0
Limit (dB)	15.4	15.1	12.3	12.3

PASS	MAIN	SR	MAIN	SR
Worst Pair	3,6-4,5	3,6-4,5	3,6-4,5	3,6-4,5
<b>ACR-N (dB)</b>	24.0	24.4	72.7	70.3
Freq. (MHz)	2.8	3.1	249.5	233.5
Limit (dB)	61.0	60.8	-2.8	-1.0
Worst Pair	3,6	3,6	3,6	3,6
<b>PS ACR-N (dB)</b>	26.3	26.2	72.7	73.9
Freq. (MHz)	2.8	2.9	233.0	249.5
Limit (dB)	58.0	58.0	-3.9	-5.7

N/A	MAIN	SR	MAIN	SR
Worst Pair	7,8	7,8	4,5	1,2
<b>RL (dB)</b>	11.3	12.9	20.9	21.6
Freq. (MHz)	1.0	1.0	180.0	182.0
Limit (dB)	19.0	19.0	9.4	9.4

Compliant Network Standards:  
 10BASE-T 100BASE-TX 100BASE-T4  
 1000BASE-T 2.5GBASE-T 5GBASE-T  
 ATM-25 ATM-51 ATM-155  
 100VG-AnyLan TR-4 TR-16 Active  
 TR-16 Passive