



Cable ID/ Test ID: PCF6A-10CU-0100-R-001

Test Limit: ISO11801 Channel Class Ea

Limits Version: V7.11

Date / Time: 2026/01/27 17:00:32

Operator: Lanberg

Headroom 16.9 dB (NEXT 3,6-4,5)

Cable Type: Cat 6A S/FTP

NVP: 77.0%

Main: Versiv

S/N: 24410021

Software Version: V6.14 Build 9

Calibration Date: 2025/05/28

Adapter: DSX-602 (DSX-CHA004)

S/N: 25073276

Test Summary: PASS

Remote: Versiv

S/N: 24250049

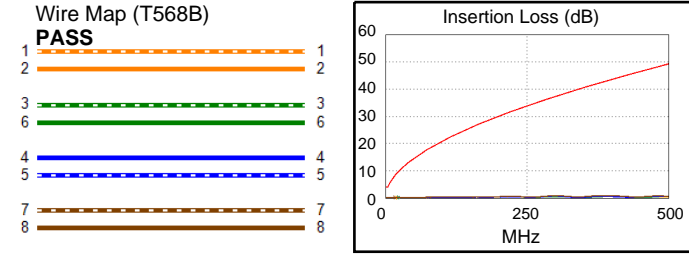
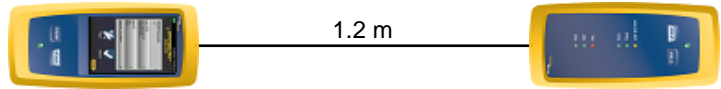
Software Version: V6.14 Build 9

Calibration Date: 2025/05/28

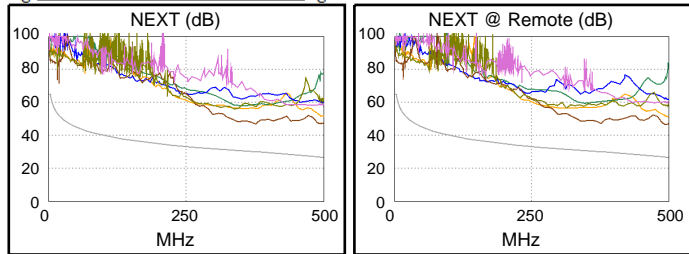
Adapter: DSX-602R (DSX-CHA004)

S/N: 25073277

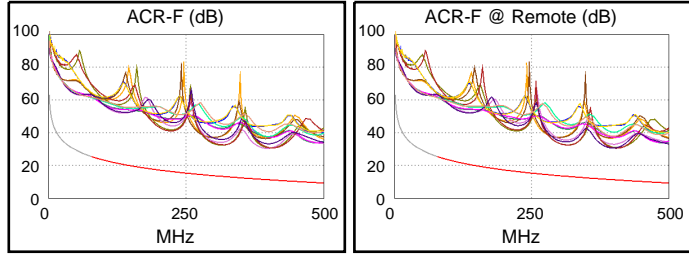
Length (m), Limit 100.0	[Pair 1,2]	1.2
Prop. Delay (ns), Limit 555	[Pair 1,2]	5
Delay Skew (ns), Limit 50	[Pair 1,2]	0
Resistance (ohms), Limit 25.00	[Pair 3,6]	0.43
Insertion Loss Margin (dB)	[Pair 1,2]	42.2
Frequency (MHz)	[Pair 1,2]	389.0
Limit (dB)	[Pair 1,2]	43.0



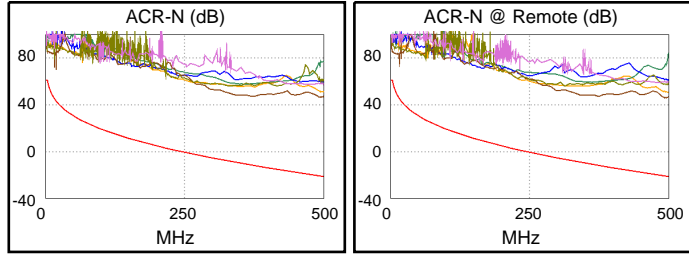
	Worst Case Margin		Worst Case Value	
N/A	MAIN	SR	MAIN	SR
Worst Pair	3,6-4,5	3,6-4,5	3,6-4,5	3,6-4,5
NEXT (dB)	16.9	17.1	16.9	19.9
Freq. (MHz)	377.0	377.0	377.0	496.0
Limit (dB)	30.0	30.0	30.0	26.7
Worst Pair	3,6	3,6	3,6	3,6
PS NEXT (dB)	19.0	19.5	22.0	21.6
Freq. (MHz)	376.0	377.0	496.0	497.0
Limit (dB)	27.0	27.0	23.6	23.6



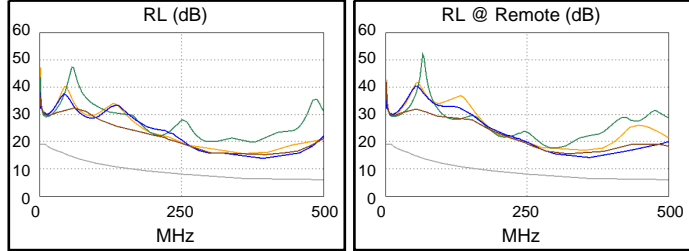
PASS	MAIN	SR	MAIN	SR
Worst Pair	3,6-4,5	4,5-3,6	3,6-7,8	4,5-3,6
ACR-F (dB)	19.0	19.1	19.0	19.5
Freq. (MHz)	316.0	316.0	397.0	408.0
Limit (dB)	13.3	13.3	11.3	11.0
Worst Pair	3,6	3,6	3,6	3,6
PS ACR-F (dB)	19.7	18.9	20.0	19.0
Freq. (MHz)	312.0	403.0	401.0	404.0
Limit (dB)	10.4	8.2	8.2	8.1



PASS	MAIN	SR	MAIN	SR
Worst Pair	3,6-4,5	3,6-4,5	3,6-4,5	3,6-4,5
ACR-N (dB)	24.9	24.0	58.6	67.1
Freq. (MHz)	2.8	3.0	377.0	495.0
Limit (dB)	61.0	61.0	-12.3	-21.1
Worst Pair	3,6	3,6	3,6	3,6
PS ACR-N (dB)	26.2	25.6	69.2	68.9
Freq. (MHz)	3.9	3.0	496.0	497.0
Limit (dB)	56.7	58.0	-24.2	-24.3



N/A	MAIN	SR	MAIN	SR
Worst Pair	4,5	4,5	4,5	4,5
RL (dB)	7.4	7.7	7.5	7.7
Freq. (MHz)	384.0	360.0	385.0	360.0
Limit (dB)	6.2	6.4	6.1	6.4



Compliant Network Standards:
 10BASE-T 100BASE-TX 100BASE-T4
 1000BASE-T 2.5GBASE-T 5GBASE-T
 10GBASE-T ATM-25 ATM-51
 ATM-155 100VG-AnyLan TR-4
 TR-16 Active TR-16 Passive