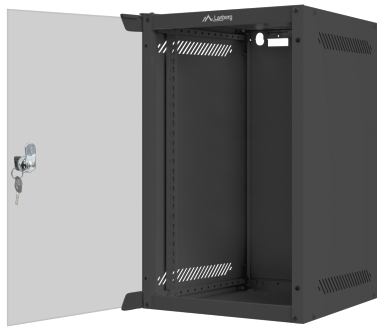




WF10-2309-10B

RACK CABINET 10" WALL-MOUNT



PRODUCT FEATURES:

- Made of high quality rolled steel
- Designed for self-assembly (FLAT PACK)
- Equipped with numbered mounting rails
- Included wall mounting bracket
- Cable entry panel: top and bottom

PRODUCT SPECIFICATION:

Type of cabinet	Wall mount
Size	10"
ICT Height	9 U
Assembly type	Self-assembly
Weatherproof rating	IP20
Working depth	238 mm
Standard	ANSI/EIA RS-310-D, DIN 41491/PART 1, DIN 41494/PART 7, IEC297-2:1982
Maximum static load	20 kg
Front door types	Temper glass
Slot amount for fans	1
Colour	Black
Front door thickness	5 mm
Upper & lower panel thickness	1 mm
Side panel thickness	1 mm
Mounting rails thickness	1,4 mm
Other elements sheet thickness	1,1 mm
Depth	310 mm
Weight	7 kg
Included Accessories	M6 screws, Mounting bracket, Front lock